

CEC UPDATE: 9:45 to 10:45 A.M. SUNDAY SCHOOL

Last August the organizing, program planning and recruiting for an alternate Sunday School hour was undertaken in the hopes that a structured Bible study for all primary school ages could be offered to children of parents attending Adult Education programs (held during the same hour). The idea was originally conceived and adopted by the congregation during the Goals and Objectives planning for 1976.

This effort was implemented in September, 1976, with subsequent marginal attendance increases in both the classrooms as well as Adult Education.

Recent attendance, however, has declined to a level where it now becomes questionable to continue asking staff volunteers to plan meaningful hours of study. Participation is at an all-time low (1-3 per average Sunday).

The Christian Education Committee's reaction will be to evaluate the continuation of 9:45 to 10:45 A.M. Sunday School over the next four weeks. A summary and conclusive statement will then be published in the March issue of Steeple to People.

PPCPPPCPP

ADULT EDUCATION 9:45-10:45 A.M. Beginning January 23, Dr. Harold Durfee will lead a three-part series concerning the Theology of Hope, one of the most recent developments in contemporary theology. This movement, led by W. Pannenberg, offers a serious critique of the neo-orthodoxy which has dominated Protestant theology in this century. Dr. Durfee will continue his discussion on January 30, concluding February 6.

PPCPPPCPP

WE WELCOME THE ALBRIGHTS

Bill and Kitty Albright and daughter Ann were received into the membership of our church at the Session meeting on Monday, January 10. They come to us by transfer of membership from Myers Park Presbyterian Church of Charlotte, North Carolina. The Albrights live at 12209 Piney Meeting House Road in Potomac. Phone: 983-1338. Bill is the distributor for the Schlitz Brewing Company in this area. Ann is in her senior year at Walt Whitman High School. Kitty and Bill have two other children - college students Bill and Carolyn. We warmly welcome the Albrights into the membership of Potomac Presbyterian Church.

PPCPPPCPP

IT'S JANE AGAIN

Many thanks to all the choir members who gave an extra measure of dedication and talent to make our Christmas music extra special this year. It could not have been so inspiring (did it inspire anyone out there to join the choirs? Hope so!) or so beautiful without some very special people who endured some long rehearsals with a harrassed choir director and produced lovely results. Thanks to all!

We also owe a big vote of thanks to Bo Heininger who produced an excellent tape of the carol service on December 19. We now have a stereo reel-to-reel tape and a cassette which may be borrowed for the

listening pleasure of anyone who missed it the first time around! The stereo tape will be placed in the library, hopefully as Opus 1 in a long line of recordings of our musical endeavors. JB

P.S. Easter is coming! What are all you singers doing out there in the congregation?

PPCPPPCPP

NOT ONLY IS EASTER COMING, JANE; STRAWBERRIES ARE COMING, TOO!



The weather outside IS frightful,
But the needlework is delightful.
So if you've no place to go,
Come and sew, come and sew, come and sew.

Hope the above ditty doesn't scare off the non-sewers. There's plenty else to do to help PPC get ready for the 1977 Third (would you believe!) Annual Strawberry Festival. The Crafty Ladies have been cutting, stuffing and gluing for several weeks now. All are welcome to join in the Wednesday morning get-togethers. Watch the bulletin for location announcements. Due to the icy slopes in the church parking lot, the next few Wednesday meets will be held alternately at the homes of co-chair-ladies Lynn Bigler and Maddy Saxton. See you at Maddy's, 10712 Rock Run, on February 2. Always bring your scissors. Presently, we're creating a menagerie of stuffed animals; wreath making next.

We invite those who cannot participate on wednesdays to participate in their own homes by creating their own things to donate to the Festival. Let Lynn know what you're doing, please. Surely every lady reading this can break off a starter or three from her favorite house plant RIGHT NOW and "make" us a new plant to sell in June.

We're looking for a man! Can one of you handsome and talented fellows out there build us a doll house to sell? Also needed: fabric scraps of all kinds, trims of all kinds, small pinecones and other dry natural items. All the baby's breath your garden can spare.

There are still several committee chairmanships open for this year's Festival. Here's your opportunity to display your talent and ability in such exciting and challenging areas as: soft drinks, clean up, breads, strawberry pies, jams, and white elephants. Call 299-6437 where Lynn is waiting to sign you up!

The Festival is not just a women's activity; it's an all-church project. We need every warm body in the congregation to make 1977's fund raiser even more successful than last year's. Yes, I'm talking to every husband, 7-10, senior high, choir member, Sunday School participant, and every lady in the church. Once you get into it, you'll discover our Festival is quite a FUN(D) RAISER!

PPCPPPCPP

WHAT HAPPENED TO THE \$2700 WE MADE LAST YEAR VIA THE STRAWBERRY FESTIVAL

Those participating in the Festival decided the profits should be divided into fourths and used in these ways: 1-Seed money for Festival '77, 2-Local Mission, 3-General Mission, 4-An in-church project of the ladies' choice.

The money held for seed, of course, will be used to prepare for the 1977 Strawberry Festival in the coming months.

The \$675.00 given to the Church and Community/Mission Interpretation Committee for local mission was dispersed as follows: \$150 to Community Ministry of Montgomery County, \$250 to Karma Academy Scholarship Fund, and the remaining \$275 to be used as the need arises in 1977.

The General Mission portion was sent to Presbytery along with a portion from the Christmas Eve Special Offerings and a portion from the 1976 Budget as a part of our self-allocation of \$2654.00.

And, as a report on the use of the final quarter, Nancy Mellem's unique appeal given last Sunday morning is repeated here:

"The Strawberry Festival ladies want to extend an invitation to you to join an exclusive Key Club! For only \$6 you may buy a key - piano, that is. Not only that, but you may choose your key if you take advantage of this offer right away. Perhaps you are an F# type person - there are seven F#'s on a piano keyboard for you to choose from. If you and your spouse can't agree, buy two! You may not be aware that there is only one piano in the church. I'm sure all the men who have helped carry it up and down will vouch for that fact. The ladies who worked on the Festival set aside \$675 in the hope of remedying this situation. A committee consisting of Jane Bourdow, Joyce Jenkins, Lynn Bigler and myself has done research and settled on an Everett piano for \$1167. With your support, the church will have two pianos. After the service this week and before the service next week there will be experts in the narthex to help you select just the right note for your personality, or you may send a check to the church marked 'piano'. This is probably the only key club whose membership is tax deductible!"

An update on the above situation reveals the keys are going fast; more than half in minutes after the service on January 16. Don't be left out. If you rush your check to PPC today, you can probably still get a chord for \$18.00!

PPCPP

Interested in a February Theater Party? Singles and Doubles would like you to call Miriam Sass 299-6094 or Jean Hartman 299-7189 by Jan. 26, to express interest in attending "Once Upon a Mattress" at the Harlequin Dinner Theater in Rockville as a group, February 18. A minimum of 20 persons is needed; cost: \$13.50 PER person.

Square Reelers Square Dance Club will meet for dancing again on Jan. 28 and Feb. 25, 8:30 p.m. at the church. If you would like to join us, please call Camille Kendall 424-7539 or Velma Killion 299-5442.

THANKYOUTHANKYOUTHANKYOUTHANKYOUTHANKYOUTHANKYOUTHANKYOUTHANKS
TO:

- the many who helped decorate the sanctuary for Christmas
- those who donated poinsettias for the Christmas decorations
- all the young people who participated in Advent and Christmas Eve services
- Lynn Bigler for making our new paraments
- Ruth Ruberl and Joy Garcia for the communion tablecloth (Ruth wove the cloth herself!)
- Compton Jones for redrawing the Steeple to People masthead

CHURCH CALENDAR OF EVENTS

FEBRUARY

1977

SUNDAY	MONDAY	TUESDAY	WEDNESDAY	THURSDAY	FRIDAY	SATURDAY
6 New Member Recognition Sunday Sr. Higns at Bowers 6:30	7	8 Bible Study 10:00	9 Crafts 9:30 Bible Study 8:00	10 7-10's 4:30 Choir 8:00 Girl Scouts 9:30	11	12
13 Sr. Higns at Chafees 6:30	14 Happy Valen- tine's Day! Committees 8:00	15 Bible Study 10:00	16 Crafts 9:30 Bible Study 8:00	17 7-10's 4:30 Choir 8:00	18 Singles/Doubles Theater Party	19
20 No Sr. Higns	21 Session 8:00	22 Happy Birthday G.W.! Bible Study 10:00	23 Crafts 9:30 Bible Study 8:00 <i>Ash Wednesday</i>	24 7-10's 4:30 Choir 8:00	25 Square Reelers 8:30	26
27 First Sunday of Lent Sr. Higns at Thompsons 6:30	28	<p>A Ski-Study Retreat For those in grades 9-12 will be held January 28-30, at Camp Hairfield. Because of the camp's reduced winter staff, there is room for only 32 students. Notice of the trip will be sent to active Sr. Higns and ninth graders. Others interested may call Mr. Gathney 384-4004 or Mrs. Howe 299-7761 for possible openings. The adult leaders thank you for your understanding of this unavoidable space problem.</p>				

JANUARY

1977

AN OPEN LETTER TO ALL MEMBERS OF POTOMAC PRESBYTERIAN CHURCH

A couple of Sundays ago, I marked my first anniversary as the minister of Potomac Presbyterian Church. In retrospect, it seems like such a short time and yet I feel as if I have genuinely become a part of this community. This has been an excellent year for our church. You have far exceeded my expectations in this past year. We have begun to build a caring community, made dramatic moves in Christian Education, improved our financial status, and increased our membership. The signs for the future are extremely positive, but we need your continued participation. On behalf of the Session, I want to thank you for your commitment in 1976. Personally, I want to thank you for your acceptance of me and I look forward to 1977 with great anticipation.

-Dr. David L. Uhl

PPCPPPCPPCPPPCPPCPPPCPPCPPPCPPCPPPCPPCPPPCPPCPPPCPPCPPPCPPCPPC
ANNUAL CONGREGATIONAL MEETING - JANUARY 23, 1977 - IMMEDIATELY AFTER
THE WORSHIP SERVICE. ALL MEMBERS ARE ENCOURAGED TO ATTEND. COMMITTEE
REPORTS AND BUDGETARY MATTERS ARE ON THE AGENDA.

PPCPPPCPPCPPPCPPCPPPCPPCPPPCPPCPPPCPPCPPPCPPCPPPCPPCPPPCPPCPPC
PROGRESS REPORT - CHURCH PICTORIAL DIRECTORY

In spite of ice and snow and sub-zero temperatures, 89 families turned out to have their pictures taken for the church directory. A make-up session is planned for those who were unable to make it, on February 16-17. You will be advised later of the date and time. Please contact Carol Helmendach 299-4437 to indicate your interest. Let's have 100% participation and really make our directory representative of Potomac Presbyterian Church.

PPCPPPCPPCPPPCPPCPPPCPPCPPPCPPCPPPCPPCPPPCPPCPPPCPPCPPPCPPCPPC
MARY E. J. CATHEY - OUR NEW DIRECTOR OF CHRISTIAN EDUCATION

We extend a warm welcome to Mary E. J. Cathey as she joins the staff as Director of Christian Education. Mary resides in Silver Spring with her husband, Dr. Henry Cathey, a horticulturist, a daughter Marcie and a son Henry, Jr. Marcie and Henry attend Paint Branch High School. The Catheys are members of the Colesville Presbyterian Church where Mary is currently active in the junior high program. The C.E. Committee is fortunate to have Mary participate in the life and programs of PPC's continuous learning process. She brings the experience and direction essential for developing and maintaining educational opportunities for all members of our growing church. Welcome, Mary - it's good to have you with us.

CEC UPDATE: 9:45 to 10:45 A.M. SUNDAY SCHOOL

Last August the organizing, program planning and recruiting for an alternate Sunday School hour was undertaken in the hopes that a structured Bible study for all primary school ages could be offered to children of parents attending Adult Education programs (held during the same hour). The idea was originally conceived and adopted by the congregation during the Goals and Objectives planning for 1976.

This effort was implemented in September, 1976, with subsequent marginal attendance increases in both the classrooms as well as Adult Education.

Recent attendance; however, has declined to a level where it now becomes questionable to continue asking staff volunteers to plan meaningful hours of study. Participation is at an all-time low (1-3 per average Sunday).

The Christian Education Committee's reaction will be to evaluate the continuation of 9:45 to 10:45 A.M. Sunday School over the next four weeks. A summary and conclusive statement will then be published in the March issue of Steeple to People.

PPCPPPCPPCPPPCPPCPPPCPPCPPPCPPCPPPCPPCPPPCPPCPPPCPPCPPPCPPCPPC

ADULT EDUCATION 9:45-10:45 A.M. Beginning January 23, Dr. Harold Durfee will lead a three-part series concerning the Theology of hope, one of the most recent developments in contemporary theology. This movement, led by W. Pannenberg, offers a serious critique of the neo-orthodoxy which has dominated Protestant theology in this century. Dr. Durfee will continue his discussion on January 30, concluding February 6.

PPCPPPCPPCPPPCPPCPPPCPPCPPPCPPCPPPCPPCPPPCPPCPPPCPPCPPPCPPC

WE WELCOME THE ALBRIGHTS

Bill and Kitty Albright and daughter Ann were received into the membership of our church at the Session meeting on Monday, January 10. They come to us by transfer of membership from Myers Park Presbyterian Church of Charlotte, North Carolina. The Albrights live at 12209 Piney Meeting House Road in Potomac. Phone: 983-1338. Bill is the distributor for the Schlitz Brewing Company in this area. Ann is in her senior year at Walt Whitman High School. Kitty and Bill have two other children - college students Bill and Carolyn. We warmly welcome the Albrights into the membership of Potomac Presbyterian Church.

PPCPPPCPPCPPPCPPCPPPCPPCPPPCPPCPPPCPPCPPPCPPCPPPCPPCPPPCPPC

IT'S JANE AGAIN

Many thanks to all the choir members who gave an extra measure of dedication and talent to make our Christmas music extra special this year. It could not have been so inspiring (did it inspire anyone out there to join the choirs? Hope so!) or so beautiful without some very special people who endured some long rehearsals with a harrassed choir director and produced lovely results. Thanks to all!

We also owe a big vote of thanks to Bo Heininger who produced an excellent tape of the carol service on December 19. We now have a stereo reel-to-reel tape and a cassette which may be borrowed for the

listening pleasure of anyone who missed it the first time around! The stereo tape will be placed in the library, hopefully as Opus 1 in a long line of recordings of our musical endeavors. JB

P.S. Easter is coming! What are all you singers doing out there in the congregation?

PPCPPPCPPCPPPCPPCPPPCPPCPPPCPPCPPPCPPCPPPCPPCPPPCPPCPPPCPPCPPC

NOT ONLY IS EASTER COMING, JANE; STRAWBERRIES ARE COMING, TOO!



The weather outside IS frightful,
But the needlework is delightful.
So if you've no place to go,
Come and sew, come and sew, come and sew.

Hope the above ditty doesn't scare off the non-sewers. There's plenty else to do to help PPC get ready for the 1977 Third (would you believe!) Annual Strawberry Festival. The Crafty Ladies have been cutting, stuffing and gluing for several weeks now. All are welcome to join in the Wednesday morning get-togethers. Watch the bulletin for location announcements. Due to the icy slopes in the church parking lot, the next few Wednesday meets will be held alternately at the homes of co-chair-ladies Lynn Bigler and Maddy Saxton. See you at Maddy's, 10712 Rock Run, on February 2. Always bring your scissors. Presently, we're creating a menagerie of stuffed animals; wreath making next.

We invite those who cannot participate on wednesdays to participate in their own homes by creating their own things to donate to the Festival. Let Lynn know what you're doing, please. Surely every lady reading this can break off a starter or three from her favorite house plant RIGHT NOW and "make" us a new plant to sell in June.

We're looking for a man! Can one of you handsome and talented fellows out there build us a doll house to sell? Also needed: fabric scraps of all kinds, trims of all kinds, small pinecones and other dry natural items. All the baby's breath your garden can spare.

There are still several committee chairmanships open for this year's Festival. Here's your opportunity to display your talent and ability in such exciting and challenging areas as: soft drinks, clean up, breads, strawberry pies, jams, and white elephants. Call 299-6437 where Lynn is waiting to sign you up!

The Festival is not just a women's activity; it's an all-church project. We need every warm body in the congregation to make 1977's fund raiser even more successful than last year's. Yes, I'm talking to every husband, 7-10, senior high, choir member, Sunday School participant, and every lady in the church. Once you get into it, you'll discover our Festival is quite a FUN(D) RAISER!

PPCPPPCPPCPPPCPPCPPPCPPCPPPCPPCPPPCPPCPPPCPPCPPPCPPCPPPCPPC

WHAT HAPPENED TO THE \$2700 WE MADE LAST YEAR VIA THE STRAWBERRY FESTIVAL

Those participating in the Festival decided the profits should be divided into fourths and used in these ways: 1-Seed money for Festival '77, 2-Local Mission, 3-General Mission, 4-An in-church project of the ladies' choice.

The money held for seed, of course, will be used to prepare for the 1977 Strawberry Festival in the coming months.

CHURCH CALENDAR
OF EVENTS

FEBRUARY

1977

SUNDAY	MONDAY	TUESDAY	WEDNESDAY	THURSDAY	FRIDAY	SATURDAY
		1 Bible Study 10:00	2 Crafts 9:30 Bible Study 8:00	3 Choir 8:00 7-10's 4:30	4	5
6 New Member Recognition Sunday Sr. Higns at Bewers 6:30	7	8 Bible Study 10:00	9 Crafts 9:30 Bible Study 8:00	10 7-10's 4:30 Choir 8:00 Girl scouts 9:30	11	12
13 Sr. Higns at Chafees 6:30	14 Happy Valen- tine's Day! Committees 8:00	15 Bible Study 10:00	16 Crafts 9:30 Bible Study 8:00	17 7-10's 4:30 Choir 8:00	18 Singles/Doubles Theater Party	19
20 No Sr. Higns	21 Session 8:00	22 Happy Birthday G.W.! Bible Study 10:00	23 Crafts 9:30 Bible Study 8:00 <i>Ast. Wednesday</i>	24 7-10's 4:30 Choir 8:00	25 Square Reelers 8:30	26
27 First Sunday of Lent Sr. Higns at Thompsons 6:30	28	A Ski-Study Retreat for those in grades 9-12 will be held January 28-30, at Camp Fairfield. Because of the camp's reduced winter staff, there is room for only 32 students. Notice of the trip will be sent to active Sr. Higns and ninth graders. Others interested may call Mrs. Cathy 384-4004 or Mrs. Howd 299-7761 for possible openings. The adult leaders thank you for your understanding of this unavoidable space problem.				

STEEPLE TO PEOPLE

POTOMAC
PRESBYTERIAN CHURCH
POTOMAC, MARYLAND

FEBRUARY

1977

DR. UHL ON PARISH GROUPS: WHAT DO THEY DO? WHAT COULD THEY DO?

Our church is divided into parish groups. This means that every family in our church is a member of one of these groups. But wait a minute! What's a parish group? How many are there? What do they do? Well, to begin, parish groups are smaller units of the congregation made up of approximately 10 or 12 family units with an elder as the head of each group. Each family in the congregation is assigned to one of these groups. Since we have twelve elders, it would be logical that there are twelve parish groups and that's exactly how many we have. But then there is the third question - what do they do? Indeed, that is the most important question - WHAT DO THEY DO?

The Congregational Life Committee has been trying to answer that question because unless they serve a real need, the groups are of little value. In the past year, the groups have been used to:

- 1) Help introduce the minister to the congregation.
- 2) Serve as channels of communication.
- 3) Used as a means of canvassing the congregation when we pledged the 1977 budget.
- 4) Assisted in arranging the schedule for portraits for the church pictorial directory.

These are good uses of the parish groups. But shouldn't they be more than that? The Congregational Life Committee thinks so.

A major portion of any congregation's life lies in the area of ministering to its members. The minister and elders have certain responsibilities in this area and we expect them to fulfill these. However, we also feel that each of the members has the opportunity and privilege of ministering to each other.

The church is an institution which finds its origin through examples of faith in both the Old and New Testaments. The name literally means "called out ones". Throughout history God has called out his people whether it was Abraham, Moses and the people of Israel, or the New Testament church founded on the Day of Pentecost. The Bible indicates that the basis of this call is found in the word "covenant".

A "covenant" in this sense is an agreement. On the one hand it is an agreement God makes with us. He is our God and we are his people. On the other hand, it is an agreement we make with each other as Christians. As members of this congregation we "covenant" together to follow our common life in faith. Since we have almost 400 members now this becomes a difficult task. How do I, an individual member, minister to the other 399 members of this church?

**STEEPLE
TO
PEOPLE**

POTOMAC
PRESBYTERIAN CHURCH
POTOMAC, MARYLAND

JANE BOURDOW will present an organ recital on Sunday, March 6, at St. Andrew's Episcopal Church, 4000 Lorcom Lane, in Arlington, Virginia. There will be a brief service of Evensong at 5:00 p.m., followed by the recital, at which works of Bach, Sweelinck and Widor will be performed. Everyone is cordially invited to attend.

A NEW MEMBER SEMINAR will be held Sunday, March 27 at 8:00 p.m. A 3-part orientation program for new members will be held at 9:45 a.m. in the church library on Sundays, March 20, 27, and April 3. Baby sitting will be provided. If you are interested in uniting with the church at this time, contact Dr. Uhl 299-6007 or Camille Kendall 424-7539. The new members will be recognized on Palm Sunday, April 3, at the 11:00 worship service.

On Friday, March 18 in the Fellowship Room, the SINGLES AND DOUBLES will present a night of old movie classics. Come see Charlie Chaplin, W.C. Fields, and Laurel and Hardy perform as only they can! Join us at 8:00 p.m. for coffee, punch and dessert. Movies will begin at 8:30. Junior and senior high students are cordially invited. Call Marti MacDonald after 5:00 p.m. at 299-2593 for reservations.

Please note the following special occasions on your calendar:

- April 7 - Maundy Thursday service 8:00 p.m. Anne Hazard, Coordinator with Dr. Uhl and Marion Hutchison. Communion.
 - April 10 - Easter Sunday. 2 services: 9:00 a.m. and 11:00 a.m.
 - May 15 - Youth Service
 - May 22 - Confirmation Class received.
 - May 29 - Pentecost-in-the-Park. Heather Kronke, Coordinator. Communion.
 - June 4 - Third Annual Strawberry Festival!
 - June 5 - 7-10's play.
-

Watch your Sunday bulletins for information on Easter flowers from new Flower Committee Chairman, Marti MacDonald.

The Congregational Life Committee is trying a new policy regarding the noon COFFEE HOUR. Because of the wonderfully enlarged crowds coming up for coffee, and the time and expense to the hostess in preparation, goodies will no longer be served - just coffee and juice. Coffee hour Chairman, Julie Wye, wishes to thank the many persons who presided at the table during the past months. Since the hostessing job is now simplified, Julie will probably find many enthusiastic "yesses" when she calls you and you for a Sunday coffee stint!

LETTERS OF APPRECIATION have been received from the Southlawn Child Care Center (we sent them gifts for the children at Christmastime) and from Karma Academy (where we continue to support their "scholarship" program). Thanks, PPC, for your loving mission work.

Please use the Potomac Elementary School parking lot on Sunday mornings and do not park your car on Gary Road or River Road.

NOW THAT YOU'VE PAID, HAVE YOU PLAYED? - YOUR KEY, THAT IS!

The Key Club came through! The Sebastian, W. Malone, Hazard, Bower, D. Thompson, Woodcock, Killion, Spears, Hutchison, Dunnavant, Bentzen, Kendall, Hartman, Allen, Spivey, Kroncke, Stobie, Durfee, Jenkins, Fredlund, McPhee, Albright, Jones, R. Hall, Hoge, D. Smith, Boddiger, Sass, Clark, Eckerd, Hawley, Wade, King, Kuwabara, Helmendach, Yates, Bigler, Bourdow, Heininger, Shaffer, Guffey, Thomas, Koonce, L. Smith, O'Neal, Maxwell, Willetts, MacDonald, Cookerly, Garcia, Lincoln, St. Phard, Schilling PIANO is here! The church's musical organizations want to extend their thanks to all of you for your generous support. Obviously, the good people of PPC can do anything they set their minds to. Preparing this year's Easter music will be a joy with a fine new instrument to work with - and there aren't many choir directors in town who can relax on a padded bench during rehearsal! Thanks again.

JB

A committee has been formed to recommend uses for MEMORIAL FUNDS. Jon Hawley is the chairman; other members are Ron Chaffee, Bill Hutchison, Bill King and Sally O'Neal. The purpose of the committee will be to set a policy for the use of memorial funds. At the present, no such plan exists. If you have any suggestions, please contact the members of the committee.

On Sunday, February 13, we were privileged to have GARY DURFEE lead our service of worship and also honor him that day. Gary is a member of our congregation and is a candidate for the ministry who has been accepted at Princeton Seminary. We are extremely proud of Gary and wish him the very best as he begins his seminary training.

Last Monday night the Session voted to participate in the annual Lenten offering - THE ONE GREAT HOUR OF SHARING. More information will come later but at the present, it is anticipated the offering will be received on Palm Sunday, April 3.

The 7-10's DINNER/DESSERT PROGRAM has run very smoothly and Dort Hall wishes to thank all the mothers who participated. However, it will be necessary for everyone to sign up for a "third time". March 10 through June 9 are all open, so pick your date (and your co-worker, if you like) and call Dort at 762-0844 for confirmation. Otherwise, Dort will have to assign dates and it might not be to your advantage. There is an up-to-date schedule in the kitchen which you may check and pencil in, but don't forget to call Dort!

The HEAVY WINTER COATS AND SHOES (not accepted by Church world service during our November clothing drive) were given to the "Cloth-a-thon" Drive sponsored by the D.C. Fire Department. The clothing collected by the fire departments was taken to a "Clothing Boutique" - an old store in D.C. Needy families are taken to this store and GIVEN the clothing. Individuals as well as entire families are outfitted at this "store" - FREE of charge.

The STRAWBERRY FESTIVAL of 1977 is alive and well and won't remain on the back pages of the newsletter for too many more months! Soft drinks, strawberry, and clean up chairmen are still needed. The craft groups which meet every Wednesday are in need of the following supplies: small glass jars, small artificial fruits, old artificial flowers, aluminum pie pans, and dry cleaner bags. And we always can use fabric and trim scraps. Leave any donations in the office with Lynn Bigler's name on the container. All are invited to join the weekly craft get-togethers. Watch the Sunday bulletins for locations and agenda.

One RUG has been donated to the church and is currently in use in the nursery. Still needed are donations for the library and choir room. Isn't it time to replace your living room rug?

We are happy to welcome to membership in our church and to its work and worship the following NEW MEMBERS who were received by the session on Sunday evening, January 30, at the home of Elder Bob Fredlund.

DR. AND MRS. DONALD BERGSMA (CLAUDIA), 12101 Drews Ct., Potomac. 977-0513. The Bergsmas have 3 children: Donald 9, Amy 6 and Abigail 8 months. Dr. Bergsma is an ophthalmologist at NIH. The family comes to us by Transfer of Membership from Pilgrim United Church of Christ, Silver Spring, Maryland.

MR. AND MRS. DOUGLAS ANDERSON (ROBERTA), 8805 Cold Spring Drive, Potomac. 279-7522. The Andersons have 2 children: Valerie 16 and Gregg 14. Doug works for Alma Desk Company. They transferred from the First Presbyterian Church of Allentown, Pennsylvania.

MR. AND MRS. THOMAS FARRAR (FREDIA MARIE), 13613 Lakewood Court, Rockville. 424-5265. The Farrars have 3 children: Michael 12, Christian 9 and Gisela 3. Tom is with the National Science Foundation. The Farrars come to us by Certificate of Transfer from the Warner Memorial Presbyterian Church, Kensington, Maryland.

MR. AND MRS. BOB BARTLETT (PHYLLIS), 9916 Conestoga way, Potomac. 299-2842. The Bartletts have 4 children: college students Craig and Gary, Kevin in the 11th grade, and Carrie in the 8th grade. Bob is with Martin Marietta. The Bartletts come to us by Certificate of Transfer from the Grandview Heights Community United Methodist Church of Lancaster, Pennsylvania.

STUDY GROUP CREATED FOR LONG RANGE PPC PLANNING

The church often has a tendency to operate from crisis to crisis, simply reacting to whatever arises. This method fails to provide overall direction and planning.

What are the needs of Potomac Presbyterian Church? What is the direction of our congregation? Can we make some projections about the future of our church? If so, what are the implications of those projections? These questions are the basis for consideration by the study group for long range planning which has recently been established.

This 9-member group hopefully reflects the various interests and divergent opinions of the congregation: Michael Bentzen, Lynn Bigler, George Boddiger, Graham Helmendach, Joyce Jenkins, Dennis McMahon, Nancy Mellem, Alice Smith and Bob Yates.

The group is being asked to consider the following:

1. Review of present programs and resources.
2. Consideration of staff utilization and responsibilities in

light of the present situation and our future needs.

3. Projections of future growth and its implications for ministry (programs and resources).
4. Adequacy of physical plant for present and future needs.
5. Alternate ways of utilization of facilities both present and future.

The committee shall determine its own method of operation, however, it is envisioned that the group will have to gather extensive data concerning present capabilities and future projections. To do this, it is anticipated that the study group will need to interview committee chairpersons, elders, staff members, members of the committees and members of the congregation at large. Thus the cooperation of the above individuals or groups is essential to their work.

The study group should use the Goals and Objectives (first stated January 1975 and re-evaluated January 1977) as a basic tool for beginning their work. The Church Information Form composed by the session and Pastor Nominating Committee in 1975 may also be useful to their study. Beyond this the group may secure whatever additional surveys, projections and materials from governmental groups necessary to aid them in their study.

The study group was formed by an action of the Session and will make its report to the Session no later than October of 1977. This report will contain a summary of the data compiled along with possible implications for the congregation.

The Potomac Conservation Foundation - headed by a member of our congregation - Compton Jones - has recently printed all-occasion note cards of three prize-winning oils from the Autumn Art Contest co-sponsored by the non-profit PCF and the Potomac Art League.

The cards are reproduced in two color ductones - for sale to residents and visitors to Potomac. Profits will go towards conservation projects in the Potomac area.

The cards are packaged so that there are eight cards and envelopes of each piece of art - plus one extra. Cost is \$5.00 for 25 cards. These can be seen at The Left Bank, on the PCF bulletin board outside the Potomac Village Pharmacy - or call Compton 299-9447.

The Editor has FINALLY become weary and leaves you the remainder of this page for drawing strawberries. Somehow, she thinks everybody doodles strawberries!

-LB

PARISH GROUPS

MARCIA BOOGAARD

Boogaard
Bergsma
McPhee
Snider
Riggs
Phair
Jones
Dr. Garcia
Ferrara
Albright
Lankler
Cross
Neviaser

ROBT. FREDLUND

Fredlund
Kendall
Jenkins
Carroll
Cole
Back
J. Garcia
Martin
Lewis
Benson
Green
Gilliams
Speros

WIL. KING

King
Bartholomew
McDaniel
Gregg
MacDonald
Sass
A. J. Clark
Beer
Harrison
Dykhuisen
Hartman
Dart
Howe

SALLY O'NEAL

O'Neal
Schilling
Millerr
McIntyre
Woodard
Roseman
L. Smith
C. Lee
Wade
Sebastian
Arise
Kerrigan, D.
Kerrigan, W.

KATHY MCMAHON

McMahon
Durfee
Brill
Parrar
Sawyer
Norcross
Johnston
Fling
Gregory
Tennery
Hoyt

JON HAWLEY

Hawley
Clark, E.
Stefanye
Roth
Shaffer
Kuwabara
Maxwell
Yates
A. Hall
Starkey
Landis
Kroncke
Mellem
Peters

ANN WILLETTS

Willetts
Bartlett
Hemphill
Koonce
Deyerberg
Cokerly
Scheurer
Hewlett
Haberman
Meakem
Boddiger
M. Lee

BILL HUTCHISON

Hutchison
Filson
Saxton
Dunnavant
W. Malone
Fleming
Guffey
Evans
Bigler
Savage
Fowler

ANNE HAZARD

Hazard
Maxxim
Drakert
Leshar
Mills
Hoge
Anderson
Coll
Brewer
Skinner
Lincoln
Bauer
Sharp
D. Malone
A. Thompson

RALPH HALL

R. Hall
Wakeland
Fraleay
Bond
Farabow
Brain
Coffman
Chase
Killion
Amtmann

RON CHAFFEE

Chaffee
Dewitt
Wye
Jordan
Topercer
Hinrichs
Perrin
Bower
Pownall
Spivey
Helmendach
Crockett
McCall
Thomas

BO HEININGER

Heininger
Woodcock
Bentzen
Stobie
Horne
Monroe
D. Smith
Newhouse
D. Thompson
Egan
Bissell
Ruberl
Spears

CHURCH CALENDAR
OF EVENTS

MARCH

1977

SUNDAY	MONDAY	TUESDAY	WEDNESDAY	THURSDAY	FRIDAY	SATURDAY
		1 Bible Study 10:00	2 9:30 Crafts 8:00 Bible Study	3 4:30 7-10's 8:00 Choir	4 Sr. High retreat - Summit Lake	5
6 Sr. High retreat	7	8 10:00 Bible Study	9 9:30 Crafts 8:00 Bible Study	10 4:30 7-10's 8:00 Choir	11	12
No Sr. Highs						
13 Sr. High Fun Night-meeting place to be an- nounced	14 8:00 Committees	15 10:00 Bible Study	16 9:30 Crafts 8:00 Bible Study	17 4:30 7-10's 8:00 Choir 10-2:00 rot. women's club	18 8:00 singles & doubles Old movie night	19
20 6:30 Sr. Highs at Colls	21 6:00 Session	22 10:00 Bible Study	23 9:30 Crafts 8:00 Bible Study	24 4:30 7-10's 8:00 Choir	25 square dance	26
27 6:30 Sr. Highs at Willets	28	29 10:00 Bible Study	30	31		

STEEPLE TO PEOPLE

POTOMAC
PRESBYTERIAN CHURCH
POTOMAC, MARYLAND

MARCH

1977

MORE THAN BREAD - 1977 ONE GREAT HOUR OF SHARING

The One Great Hour of Sharing special offering will be taken on Sunday, April 3, 1977. This offering provides denominations and Church World Service with the financial capabilities to meet human needs and suffering. The One Great Hour of Sharing is a combined effort of many Protestant, Anglican and Orthodox denominations, and those who contribute help relieve hunger, combat disease and give hope to those in distress. Denominational relief agencies distribute the funds given by members of their churches to those working directly in the area of need, either through their own relief personnel or through Church World Service. A good portion of the One Great Hour of Sharing offering is channeled through Church World Service.

The theme of the 1977 One Great Hour of Sharing is "More Than Bread", with emphasis on self-help education. The capability of responding immediately anywhere in the world, in time of disaster, will be combined with a renewed effort to combat the root causes of hunger and distress.

"More Than Bread" is based upon Jesus' reply when Satan tempted him to turn stones to bread and to relieve the hunger of his forty day fast. Jesus replied that man does not live by bread alone but by every word that comes from the mouth of our Lord. (Deuteronomy 8:3). The 1977 needs of God's people ARE more than bread - our contributions are multiplied several times over when God's servants transform them into real relief, wherever needed.

The 1977-78 Goals and Objectives for the Potomac Presbyterian Church include the following: "to increase special offering contributions during Lent and Advent by 25% each year." The receipts of the One Great Hour of Sharing from our church in 1976 were \$796.00. An additional \$200.00 is needed to reach this goal. Let us help to realize this opportunity for world wide mission by giving generously to the 1977 One Great Hour of Sharing.

The enclosed envelope is for your contribution and should be placed in the collection plate, along with the regular offering, on Palm Sunday, April 3. The coin boxes distributed to the children in church school should be returned at the same time, and a service of dedication will be held at the time of the children's sermon.

CONGREGATIONAL MEETING IMMEDIATELY FOLLOWING THE WORSHIP SERVICE ON SUNDAY, APRIL 3, 1977.

REVISED 1977-78 GOALS AND OBJECTIVES FOR POTOMAC PRESBYTERIAN

During two adult education sessions in January of this year, members of the congregation met to review progress on our Goals and Objectives established in January, 1975, to reassess priorities, and to identify new Goals and Objectives for 1977-78 for our church.

In this latter effort, five groups were established at the 2nd Adult Education Session, led by the Chairpersons of the five Standing Committees of Session, to deal with Goals and Objectives appropriate to their primary interests and responsibilities. These initial efforts were expanded and refined in subsequent working meetings of the Standing Committees, adopted by Session at its meeting on March 21, and are being used by the newly-established Long-Range Planning Committee as a starting point for their work.

Following, then, are the revised 1977-78 Goals and Objectives for our church, each listed with the Standing Committee of Session most responsible for its realization:

Christian Education

Goal: To maintain and further develop a strong program of Christian Education for all ages.

Objectives (means to achieve this goal):

1. Encourage each person in a leadership position to attend at least one training event a year. The Christian Education Committee will be responsible for advising church members of all available leadership training sessions.
 - A. Hold at least two training events each year for teachers for each age level.
 - B. Make class observation opportunities available for all teachers and parents.
2. Provide representation and participation by our church in the Montgomery Cluster of churches.
3. Provide active and effective Christian Education sub-committees so that the best possible program can be offered to each age level.
4. Evaluate the "Christian Education: Shared Approaches" materials in preparation for selecting the most appropriate curriculum for the Potomac Presbyterian congregation.
5. Establish a committee that will choose the preferred curriculum from the "CE:SA" and report its findings to the Christian Education Committee by mid-December, 1977, for final action by it and the Session.
6. Involve the Christian Education Committee in the recruitment of teachers for all programs of the church.
7. Evaluate the possibility of two church services with concurrent Sunday school sessions.
8. Observe public school programs to see if techniques, procedures or methods can be adapted to improve our program.

Personnel and Property

Goal: To provide on a continuing basis sound personnel and property programs which will enable the Potomac Presbyterian Church to meet its various short and long range goals and objectives.

Objectives:

1. Property Maintenance - develop a program of routine and preventive maintenance for the church buildings and grounds.
2. Personnel - establish a short and long range program for the employment of the personnel that will be required to fulfill the goals and objectives of this church.
3. Property Growth - develop a program to provide for the future needs of this church which may require growth or expansion of existing facilities.
 - A. Establish a committee to determine the needs, evaluate alternative solutions, and submit recommendations concerning additional space for offices, church school, storage and other uses to the Session for consideration in the 1978 budget.
 - B. Establish a committee to study the need for a new organ, determine the costs for repairing the existing organ and the purchase and installation of a new organ, and submit recommendations to the Session for consideration in the 1978 budget.
4. Church School Tenant - continue to provide a responsible tenant for the church school facilities on non-church days.
5. Memorial Fund List - develop and maintain a list of Session approved items which can be purchased by undesignated donations to the memorial fund. This function has been assumed by a special committee of Session chairpersons.

Stewardship and Finance

Goal: Establish and maintain a balanced budget in 1977.

Objectives:

1. Build on the excellent start in 1976 to expand the total stewardship and fund raising commitment of the church membership to meet the needs of our church, the community and the worldwide church.
2. Follow budgeted expenditures with the assistance of treasurer and be alert to anticipated needs of the church in order to control expenditures and to provide most effective use of the resources available.
3. Develop a fiscal awareness and interest within the church membership for the financial operations of our church.

Goal: Nurture and develop the individual sense of stewardship and commitment on the part of each church member which is essential for the financial well-being of our church and for the success of its mission.

Church and Community/Mission Interpretation

Goal: To engage in Christian witness during the year ahead by serving the community in which the Church is located in the following ways:

Objectives:

1. Determine whether there is or should be one activity that all members would focus upon and engage in.
2. If a new activity is selected, identify a coordinator in the church to centralize the members' interest, and to review the needs coming from outside the Church. Church and Community Committee should play a leading role in the process.
3. Increase congregational participation and support for established church-wide mission projects:
 - A. Adoption of an American Indian child
 - B. Karma Academy scholarship fund
 - C. Presbyterian Home building fund
 - D. Community Ministry of Montgomery County

Goal: To participate in the overall mission of the "worldwide" Church to a greater degree in the following ways:

Objectives:

1. Adoption of a corporate Potomac Presbyterian Church program of expanded worldwide mission which would include the following:
 - A. Increase mission contribution to Presbytery to \$4000 over mandatory apportionment in 1977 and to \$6000 in 1978.
 - B. Increase special offering contribution during Lent and Advent by 25% each year.
 - C. Support the youth of the church in selected mission projects for 1977-78, the Mission Interpretation Committee to serve as a liaison group.

Congregational Life

Goal: To continue to develop as a Christian community with concern for all members of the congregation.

Objectives:

1. To be constantly mindful of the need to foster effective communications within the church.
 - A. To strengthen the parish groups, particularly as they form covenant ties among members, enabling them to respond to one another's needs and concerns.
 - B. Establish more systematic use of the church bulletin board
 - C. Relocate the suggestion box in the vicinity of the bulletin board, and actively invite members to contribute their ideas on worship, fellowship and general church operations.
2. Be responsive to group life within the church.
 - A. Seek new fellowship opportunities for unmarried adults.
 - B. Strengthen avenues for involving new members in the church's organizational life.

In addition to the interior clean-up, Marcia Boogaard and Harry Evans are planning to work on our shrubs, flower beds and lawn. If you can spare an hour or two, please call Marcia or Harry so we can be sure to have the needed tools available to make full use of your time.

We need your help to make this Spring Cleaning Day a success. Please mark your calendar and plan to give your church a few hours of your time on April 23.

CHRISTIAN EDUCATION: SHARED APPROACHES

Initial Report of the Educational Program Study Committee.

The first CE:SA planning session of this committee was held on March 23 to discuss objectives and identify research tasks required for becoming a functional body to the church's future educational curriculum. Since the committee will serve as a representative group in determining specific choices from available programs reaching all levels of teaching and learning CE approaches, it was necessary to review various ways for accomplishing the following tasks:

(a) To evaluate what has been happening in education in our congregation during the past five years.

(b) To rewrite or develop new goals and objectives, most of which have already been established during the January goals assessment effort.

(c) To build a profile of our congregation regarding its CE character, i.e., age group representation by program, level of education, member interests, special needs, etc.

(d) To gather information about the congregation, evaluating what are the current CE emphases, what is missing, where do we go from here, etc.

The committee will soon become involved in surveying opinions while identifying new insights and impressions which the information obtained from the above tasks will have revealed.

Our Director of Christian Education, Mary Cathey, is coordinating this phase of information gathering while guiding the efforts of the committee in carefully considering all aspects of the church's potential growth in educating itself.

If you wish to serve on the Educational Program Study Committee, contact Mary Cathey at 384-4004 or Bill Hutchison at 299-4823. A few committee openings still exist which must be filled. The next meeting will be April 19, 1977, at 7:30 p.m. in the Fellowship Room.

ADULT EDUCATION SCHEDULE FOR APRIL

April 3 - Dr. Webber concludes "Parables of Jesus"

April 10 - Easter Sunday - No Adult Education class.

April 17 - Mr. Tannenholz on DNA Experiments

April 24 - Miss Jane Bourdow will give an organ recital and discuss the functions of the organ.

CHRISTIAN SINGLE ADULTS

With the support and encouragement of pastors from multiple churches and denominations in Montgomery County, we announce the formation of Christian Single Adults. The purpose of CSA is to "Combine the strengths and interests of Christian singles within the church family and to use that unified strength to enrich our own lives and the lives of others."

Specifically, the group plans a series of discussions on subjects of particular interest to singles, beginning with "Christianity for Today's Singles," and followed by "Values Clarification," "Singles Contribution to the Church Family," and other subjects suggested by the members. In addition, members of the group plan to participate in a wide range of activities (such as attending dinner theater parties, events at the Kennedy Center and National Theater, hiking, biking, canoeing, water skiing, snow skiing, etc.) and will be hoping to find others with similar interests to participate in such activities on a group basis.

Weekly meetings are scheduled for Monday nights. The next meeting will be on March 28, 1977, from 7:30-10:00, at the home of Roger Gregory, 10515 Cambridge Court, Gaithersburg, Maryland. Phone: 869-0461.

We invite inquiries and active participation by Christian single adults. If you have any questions, please contact Roger Gregory in the evenings at 869-0461, or at 340-4395 during the day.

PPC WELCOMES NEW MEMBERS ON PALM SUNDAY

We are happy to welcome to membership in our church and to its work and worship the following new members who were received by the Session on Sunday, March 27. They will be recognized at the 11:00 service on April 3.

Mr. and Mrs. Bruce Brumbaugh (Charlene), 9124 Falls Chapel way, Potomac. 340-0781. The Brumbaughs have one little girl, Mary Ann, aged 5. Bruce is with the Federal Reserve Board. The Brumbaughs come to us by Transfer of Membership from National Presbyterian Church in Washington, D.C. (Elder Ann Hazard's Parish Group).

Mrs. Robert Endicott (Betty), 9829 Conestoga way, Potomac. 299-3452. Both Betty and her husband, Bob, are reporters with N.B.C. They have two children, Sarah, 7, and Mathew, 5. Betty comes to us by Transfer of Membership from National Presbyterian Church, Washington, D.C. (Elder Ann Willetts' Parish Group).

Mrs. Thomas Garvey (Carol), 10125 Gary Road, Potomac. 299-8392. Carol and her husband, Tom, are both physicians. The Garveys have one son, Tommy, aged 6. Carol comes to us by Transfer of Membership from Brown Memorial Presbyterian Church of Baltimore, Maryland. (Elder Bill King's Parish Group).

Mr. and Mrs. Willard Hopkins (Valerie), 9009 Bronson Drive, Potomac. 299-4479. The Hopkins have two daughters: Michelle, 7, and Tiffany, 8. Bill is a Management Consultant with Arthur Young. Valerie comes to us by Affirmation of Faith and Bill by Reaffirmation of Faith. (Elder Sally O'Neal's Parish Group).

Miss Janet Johnston, 12516 Knightsbridge Court, Rockville. 762-0078. Janet is the daughter of Flo and Bill Johnston; Janet has one brother, Billy. She is a junior at Wootton High School and comes to us by Affirmation of Faith. (Elder Kathy McMahon's Parish Group).

Mr. and Mrs. Robert W. Robisch (Joan) and daughter, Wendy, 4 Lodge Court, Rockville. 340-7764. Besides Wendy, who is a senior at Wootton High School, the Robisch's have a son, Eric, an eighth grader at Frost Junior High. Bob is with Martin Marietta. The Robisches come to us by Transfer of Membership from Highlands United Presbyterian Church, Allendale, New Jersey. (Elder Kathy McMahon's Parish Group).

Mrs. Palmer Sullivan (Celia), 12265 St. James Road, Potomac. 424-2670. The Sullivans have three children: Randy, 7, Sandra, 5, and Jason, 2. Celia's husband is with the U.S. Patent Council. Celia comes to us by Reaffirmation of Faith. (Elder Kathy McMahon's Parish Group).

Mrs. Terry Sweeney (Linda), 2 Lodge Drive, Rockville. 340-3193. The Sweeneys have two children: Jason, 3, and Erin, 5. Linda's husband is an oral surgeon. Linda comes to us by Transfer of Membership from Whitneyville Congregational Church, Hamden, Connecticut. (Elder Kathy McMahon's Parish Group).

Mr. and Mrs. Donald Van Olst (Jane) and daughter, Jean, 8 Infield Court, Rockville. 762-1170. The Van Olsts have five children: June, Jeff, Tom and Barbara are grown and away from home. Jean is a senior at Wootton High School. Don works for Reuben H. Donnelley (publisher of the Yellow Pages). The Van Olsts come to us by Transfer of Membership from Jesse Lee Memorial United Methodist Church, Ridgefield, Connecticut. (Elder Ann Hazard's Parish Group).

ANNOUNCING: A MIXED DOUBLES TENNIS PARTY

The Singles and Doubles will sponsor a mixed doubles tennis party at the Cabin John Indoor Tennis Courts on Saturday evening, April 23, from 8:00 p.m. until midnight. Owing to the limitations of court space and the desire to permit participants to play reasonably frequently throughout the evening, we regrettably must limit tennis participation to twelve men and twelve women. With that number of players, the cost for the tennis will be \$6.50 per person, plus one can of new tennis balls per team. The evening will begin with a "pot luck" supper at Jon and Peggy Hawley's home at 6:15 p.m. To make reservations and obtain a meal assignment, please call the Hawleys at 424-7628.

SEVENTEENS NEWS. The group is just beginning a new unit on Martin Luther which is to be followed by a unit on Amos. The material will be presented in many different ways to help maintain interest. The young people are planning to present their annual stage production. More details of the play will come later.

SEVENTEENS DINNER FUND. Because our kitchen helpers have managed so well (many thanks to them), we only need \$10 per student to replenish the dinner fund for the second semester. Checks made payable to the Potomac Presbyterian Church, marked "7-10 Dinner" may be sent in with your student or mailed to the church.

ONE, TWO, THREE, FOUR, FIVE, SIX, SEVEN, EIGHT, NINE WEEKS LEFT

The Wednesdays have been ticking by. The Strawberry Festival craft ladies have met each week of 1977 and have created stuffed animals, dolls, jewelry, plus many other items. There are only NINE weeks left until OUR BIG DAY, JUNE 4.

Happily, co-chairladies, Lynn Bigler and Maddy Saxton, can report that all positions have been filled to make our Third Annual Festival really a charm! The following hard-workers will need your assistance as we near June. Take your pick, are you a salesperson, a cook, a gardener, a mailbox stuffer, a telephoner, a baker, an interior decorator - we can use every and all talents!

PUBLICITY: Joy Garcia
SET UP DESIGN: Betty Heininger
WHITE ELEPHANTS: Janet and Cal Koonce
PLANTS: Diane Gregg
STRAWBERRY PIES: Heather Kroncke
ICE CREAM: Sally O'Neal
SOFT DRINKS: Compton Jones
BAKED GOODS: Virginia Fredlund
JAMS AND JELLIES: Nancy Mellem/Sue Kuwabara
BREADS: Wenche Roth
PAPER PRODUCTS: Marion Hutchison
PONIES: The Boogaards and the MacDonalds

Some of the above need your special attention. Our WHITE ELEPHANT sale will NOT accept any clothing this year. We are looking for NEW or VERY GOOD USED items. How about that thing-a-ma-jig you received for Christmas for which you have no use? Donate it to our sale. We will accept used books, toys, games, bicycles, furniture, etc. Be sure not to give us broken items. Your donations may be brought to the church the week prior to the Festival for pricing.

Heather Kroncke, as you've probably heard!, has learned to operate Elaine Skinner's strawberry pie making machine. And Heather promises us 100 pies this year! That's right - 100!

Pat King will need persons all day Friday, June 3, to top berries. Sign yourself and your knife up with Pat for an hour or two any time that day.

You will be getting a call from the bakery/jelly/bread conglomerate to ask if you'll create something in those categories for us. Don't be shy - sign up for two!

Young people are needed to walk those ponies around the yard the day of the Festival. Volunteer your boots to the Boogaards or MacDonalds.

The strawberry vine has it that this is the time of year to stay away from Lynn because she's passing out jobs left and right! If any of you out there in reader-land are anxious to help but just can't figure out where you'll fit in, call Lynn at her new number 983-1682. She's bound to have a suggestion - or three!

Craft Wednesdays will continue after Easter vacation right down to the wire. Come along and see how much fun we cram into a work session once a week!

A Godspeed service was held Sunday, March 27, for the Aaron Cross family who are moving to Paris, France. We shall miss them.

Alice and Lew Smith send thanks to their many wonderful friends in PPC who sent letters of comfort and remembered them in their prayers after the loss of her mother recently.

Look to Easter and years to come with flowers! Easter lilies, azaleas, and other potted plants will be purchased to decorate our church at Easter, and then will be planted on the church grounds for us to enjoy next spring and for years to come. Won't you support the Flower Committee with your donations? They will be in the narthex after church on Palm Sunday. This is your last opportunity to participate.

HAPPY BIRTHDAY 'ANNA

Our adopted Indian child is having a birthday on April 8, and will be a lively seven years old. We are sending her a few small gifts, which include a straw doll and a jump-rope made with hobby horse handles, which have been crafted by our own church ladies.

Included with the gifts for 'Anna will be seventeen hand-drawn birthday cards made and decorated with much thought and love by Mary Alice Crockett's first/second grade Sunday School class.

The Potomac Conservation Foundation tells us "Potomac is a mess!" so they're sponsoring a community clean-up on Saturday, April 2, from 10:00 a.m. until noon. You're invited to meet on the grassy area near Drug Fair to get your collection bag - then fan out along highways and byways to pick up debris. Refreshments will be provided.

CONGREGATIONAL MEETING IMMEDIATELY FOLLOWING WORSHIP SERVICE PALM SUNDAY, APRIL 3.

At a special meeting on March 27, 1977, the Session agreed to recommend the following actions to the congregation for approval on Sunday, April 3, 1977.

- (1) To accept an offer to purchase our present manse.
 - (2) To change Dr. Uhl's call from its present form in which he is supplied with a manse for which all costs are paid by the church, to a basis where Dr. Uhl will be paid a housing allowance for the payment of normal household operating expenses.
 - (3) To approve the use of the proceeds of the sale of our present manse for the purchase of a new manse of Dr. Uhl's choosing and in which he will have partial ownership.
-

ATTENTION high school students between the ages of 16 and 18. The Montgomery County Mental Health Association sponsors a pals Program similar to the Big Brother program with which we are all familiar. They are desperately in need of volunteers of high school age to work with elementary children, ages 7-10. It is necessary that the volunteer have access to a car. These children are not retarded or delinquent; they simply need someone - YOU? Contact Gary Durfee at 424-5552, if you can help.

CHURCH CALENDAR
OF EVENTS

APRIL

1977

SUNDAY	MONDAY	TUESDAY	WEDNESDAY	THURSDAY	FRIDAY	SATURDAY
					1	2
Only 65 more of these squares and you'll be at the Strawberry Festival!						
3 New Member Recognition/ Congregational Meeting Day	4	5 Bible Study 10:00	6 Bible Study 8:00	7 Maundy Thurs. service 8:00 7-10's 4:30 Maundy Thursday	8 Good Friday service -noon St. Francis Good Friday	9
10 Easter	11 Committees 8:00	12 Bible Study 10:00	13 Crafts 9:30 Bible Study 8:00	14 7-10's 4:30 Choir 8:00 GS leaders 9:30	15 Sr. High sexuality weekend	16
17	18 Session 8:00	19 Bible Study 10:00	20 Crafts 9:30 Bible Study 8:00	21 7-10's 4:30 Choir 8:00	22	23 Tennis Party Church Spring Cleaning 9:30
24 Steeple to People Deadline Sr. Highs at C'Neals 6:30	25	26 Bible Study 10:00	27 Crafts 9:30 Bible Study 8:00	28 7-10's 4:30 Choir 8:00	29 Square keepers	30

STEEPLE TO PEOPLE

POTOMAC
PRESBYTERIAN CHURCH
POTOMAC, MARYLAND

APRIL

1977

FROM THE DESK OF DR. UHL...

From the beginning of Lent the church marches ever so determinedly toward Easter. It is the climax of the spring season for churches and the most dramatic moment of the Christian year. After this period there seems to be a let down with a slower movement toward summer and vacation. When you add spring fever and the warmer days, it often leaves the church marking time until June.

May at Potomac Presbyterian; however, is a significant month. Each of the five Sundays has a special emphasis:

May 1	Christian Family Sunday
May 8	Mother's Day
May 15	Youth Sunday
May 22	Reception of Confirmation Class
May 29	Pentecost in the Park

Five Sundays in May and they are all special Sundays. I am excited about each of these days. My hope is that each of you will share this special time and find that we are not content to simply mark time until summer. Come and share these days and find that the "second season" this spring is as meaningful as the first.

IT'S ALMOST STRAWBERRY TIME AT PPC

(I warned you I'd sneak the Festival news up to the front page!)

Committee chairmen, the craft group, and the at-home workers are extra busy these last few weeks preparing for PPC's Third Strawberry Festival. As the next month slips by, your help will be needed more and more to make June 4 a fun and fund raising day for us.

If you've never attended a Wednesday morning craft session, please make a real effort to share the May meetings with the group. There are many simple projects to complete at this point and extra hands are a significant help. We do more than sew; please don't stay away if you're not a needle wizard! Remaining projects include straw dolls, aprons, net scrubbers, jump ropes, and crowns. If you haven't seen some of our ladies wearing their gorgeous quail egg necklaces on Sunday mornings, you're in for a treat at the Festival. Be there early to assure yourself of a purchase. Crafts will be held at the church each Wednesday until the Festival at 9:30.

Those of you who are knitting or crocheting or sewing or whatever at home, please let Lynn Bigler know that your item will be completed on time. (983-1682).

In order to make the white elephant sale a big success, we need-guess what? YOUR white elephants! Everyone has several at home; look around and use this opportunity to get rid of that whatchamacallit. Janet and Calvin Koonce are in charge of our white elephants; bring your donations to the church the week prior to the Festival.

Fellowship Hall will be set up on June 3. Relief sales persons are needed. Tell Lynn if you'll help. Also on June 3, Pat King is going to clean 75 quarts of strawberries all by herself - if no one comes to her aid, that is! Surely you and your paring knife can help her for an hour or two that morning?

If you agreed to bake bread or cakes or make jelly, why not do it right now to avoid the last minute rush. Many baked goods can be frozen and kept for the big Saturday morning event. Virginia Fredlund will manage the bake shop, Nancy Mellem and Sue Kuwabara are collecting jams and jellies even now, and Wenche Roth is our bread lady.

Joy Garcia would like some persons to help deliver our publicity flyers. We plan to have a window display again in late May at the Potomac Radio and TV Shop - watch for it!

How are the plants coming along that you've been growing for Diane Gregg's department? House plants and outdoor plants are both welcome.

There will be plenty of good things to eat at the Festival: Sally O'Neal and Sons will be dishing up ice cream for you, Compton Jones is serving soft drinks, Doris Yates will have a hot dog stand, and don't miss one of the 100 strawberry pies being produced magically by Heather Kroncke and her pie people. Balloon man Bob Fredlund will be back on his old corner again to make all the children happy. Still needed are pony walkers to spell the Boogaards and MacDonalds.

C'mon, everybody - we need each and every one of you to play a part. See you at the Festival!

P.S. Please save your used bridge tallies for the craft ladies. They may be left in the office.

Also, is there a rock hound in the congregation? Please contact Lynn; she needs some input from you.

8 keys on a key ring were found during spring clean-up day. 5 say "Made in England" on one side and "Wilmot Breeden" on the other. One has a large "2470", one says "Falcon" and one says "It is unlawful to duplicate this key". The keys may be claimed in the church office.

Dr. Uhl's sermons are being recorded each Sunday for shut-ins or those who cannot otherwise attend the service. Persons wishing to borrow the cassettes, please contact Dr. Uhl or Jon Hawley.

Don't forget to pick up your booklet, "In Praise of Families", in the narthex. This has prayers and litanies written by the children and youth of the congregation in celebration of Christian Family Week, May 1-8. We hope you will use them as a part of your family devotions or as Grace for meals.

Following is the Adult Education Program for May:

- May 1 Mary Cathey, Director of Christian Education, will be our speaker.
- May 8 Bill Skinner - Films.
- May 15 Dr. Uhl will speak on the Trinity.
- May 22 Films.
- May 29 No Lay Education.
-

Our 7-10's will present an ORIGINAL program on June 5. More details will appear in the next newsletter. Be sure to reserve that evening in support of our young people.

Pentecost in the Park, May 29, will be celebrated at the Potomac Country Day School campus, the same location as last year. Meet there for 11:00 worship - NOT AT THE CHURCH - a family picnic and afternoon of games will follow the service. Everyone should bring his own main course (chicken, sandwiches, hamburgers, hot dogs, etc.), own drinks, napkins, plates and silverware. Also bring something to share - a salad, a vegetable casserole or a dessert. There will be several barbecue grills furnished for those who wish to cook hot dogs or hamburgers.

Vacation Church School is being planned for the boys and girls of PPC and the Bradley Hills Presbyterian Church, July 11-15, at Bradley Hills. An exciting program called "Created for Love" is to be held for three year olds (children who have already had their third birthday) through sixth graders. The staff would welcome any volunteers from our congregation who would care to help by teaching or offering special help with art, projects or crafts. There are openings for teachers for the full week or for one day assignments. If anyone would care to join in the fun, please call Mary Cathey at the church office or at her home. It promises to be a great week!

The Long-Range Planning Committee is holding weekly meetings, presently interviewing various committee heads and other persons to gain their input of needs for the church, now and future. Committee structure consists of Chairman Mike Bentzen, Assistant Chairman Lynn Bigler, and Secretary Dennis McMahon. Other committee members are: Joyce Jenkins, Nancy Mellem, Alice Smith, Graham Helmendach, George Boddiger, and Bob Yates.

A Godspeed service was held for the Hoge family on Easter Sunday. PPC shall miss them.

The Treasurer's report for the first quarter of 1977 indicates that the general fund balance has dramatically improved from a deficit of \$1250.00 on 1-1-77, to a positive balance of \$2423.00 as of 3-31-77. PPC, let's keep up the good work!

Saturday, April 23rd, was a golden day for the Personnel and Property Committee. About 30 people came to help with the clean out of storage areas and clean up of the church grounds. All ages, down to infant, were represented, and the spirit of fellowship made the day a happy one for everyone who participated.

The tremendous amount of work accomplished makes our plan for two such clean-ups a year a necessary part of keeping our church grounds beautiful. In the meantime, a small select volunteer crew is needed to continue the day's valiant effort. Please call Marcia Boogaard at 762-1035.

And, again, a tremendous thank you to each person who came on April 23rd.

The Singles and Doubles Annual Progressive Dinner will be held on May 20, beginning at 7:00 p.m., with a social hour at the home of Bob and Jane Jordan, 9717 Brimfield Court. The main course will be at 9712 Brimfield Court, the home of Ron and Dee Chaffee. Dessert will be at the home of Bob and Doris Yates, 9421 Winterset Drive. Cost will be \$3.00 per person plus food assignment. Call no later than May 17th for your assignment: Dee Chaffee 299-2469 or Doris Yates 340-7277.

The choir of St. Francis Episcopal Church will present the Missa Brevis St. Joannis de Deo by Franz Joseph Haydn at a service of Evensong on May 8, at 4:00 p.m. The choir will be under the direction of Sharon Ollison, and JANE BOURDOW will be the guest organist.

A new member orientation series will begin shortly. The three-part series will be held on Sunday mornings at 9:45 in Dr. Uhl's office on May 22, June 5, and June 12. Prospective new members will meet with the Session on Sunday evening, June 12, at 8:00 p.m. Church recognition will be at the June 19 worship service. Anyone wishing to unite with the church at this time, please call Dr. Uhl at 299-6007 or Camille Kendall at 424-7539.

For anyone who was unable to attend the Congregational meeting on Sunday, April 3, 1977, we are pleased to report that the congregation approved the sale of our present manse for \$93,500.00. The congregation also approved the following actions:

- 1) A change in Dr. Uhl's call that will provide him with an annual housing allowance of \$5,700.00.
- 2) The purchase of a new home for Dr. Uhl at 1987 Lancashire Drive in Potomac Woods, for \$106,000.00.

If anyone would like any additional details, please contact Bill King.

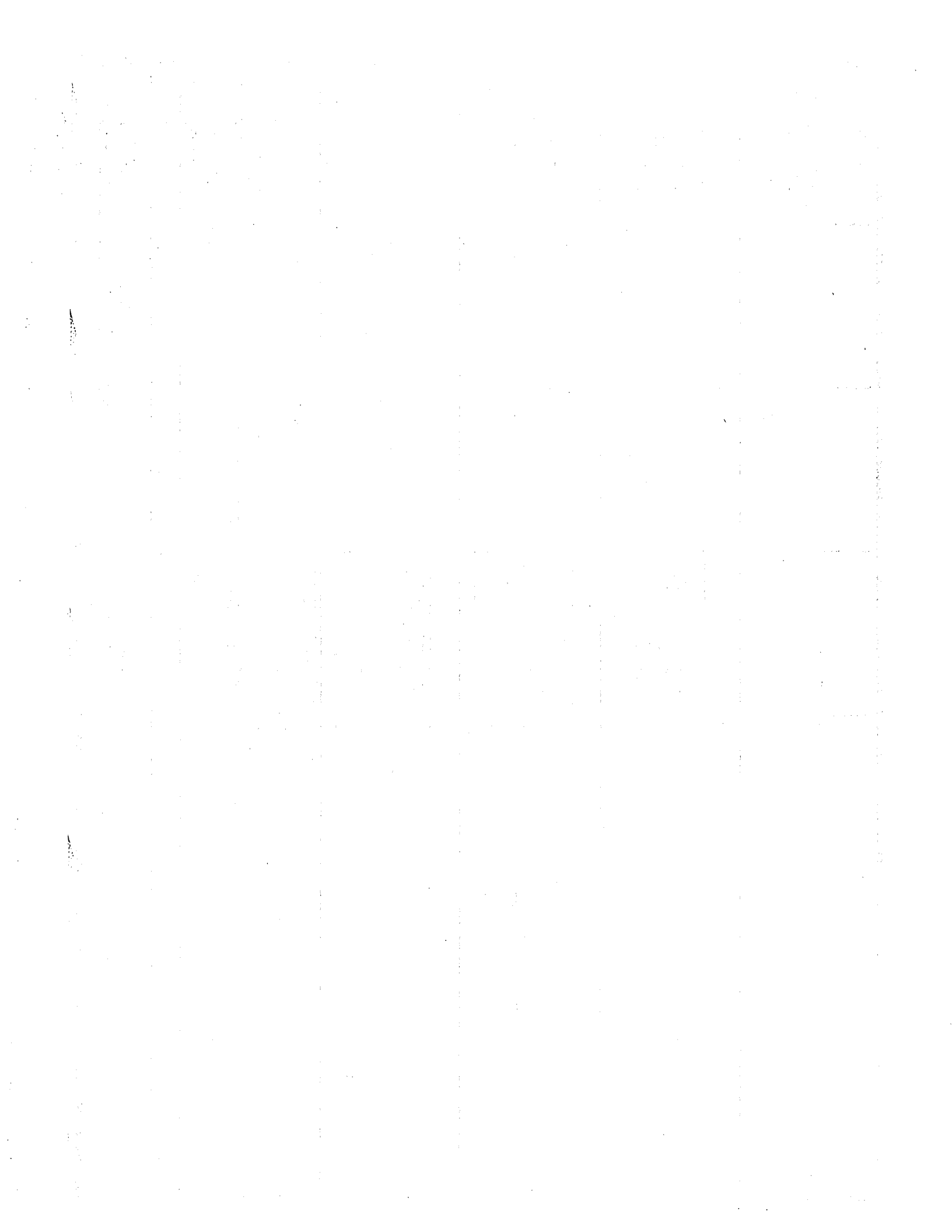
A sign-up sheet has been placed on the bulletin board in the church office for those who wish to use any of the audio visual equipment belonging to the church during Church School or for a meeting. Please be sure to sign the equipment "in" and "out" so that others who need to use it may know where it is. This will avoid conflicts and help all of us to plan and coordinate our programs. Many thanks for your cooperation.

CHURCH CALENDAR OF EVENTS

MAY

1977

SUNDAY	MONDAY	TUESDAY	WEDNESDAY	THURSDAY	FRIDAY	SATURDAY
1 Sr. Highs at Bowers 6:30	2	3 Bible Study 10:00	4 Crafts 9:30 Long-Range Planning Com. 7:30 Bible Study 8:00	5 7-10's 4:30 Choir 8:00	6	7
8 Sr. Highs at Kendalls 6:30	9 Committees 8:00	10 Bible Study 10:00	11 Crafts 9:30 Long-Range Planning 7:30 Bible Study 8:00	12 7-10's 4:30 Choir 8:00	13	14
15 Youth Sunday Sr. Highs at Evans 6:30	16 Session	17 Bible Study 10:00	18 Crafts 9:30 Long-Range Planning 7:30 Bible Study 8:00	19 7-10's 4:30 Choir 8:00	20 Singles and Doubles Dinner	21
22 Confirmation Class received Square Dance Mo Sr. Highs	23	24 Bible Study 10:00	25 Crafts 9:30 Long-Range Planning 7:30 Bible Study 8:00	26 7-10's 4:30 Choir 8:00	27	28
29 Pentecost in the Park Pentecost	30	31				STRANBERRY FESTIVAL



STEEPLE TO PEOPLE

POTOMAC
PRESBYTERIAN CHURCH
POTOMAC, MARYLAND

W

1977

FROM DR. UHL . . .

Among the reports I received at the Presbytery meeting last week was an analysis of the mission giving percentages to Presbytery causes of the churches in our area. Each church in the Presbytery was divided into sub-groups according to total receipts. In our group (i.e., total receipts of \$60,000-\$80,000) there were 16 churches. The highest percentage given was 17.7 and the lowest 0.3. Potomac ranked tenth with a percentage of 3.4.

My initial response was one of disappointment but then I realized that several years ago our percentage was close to zero. We have a long way to go but we have begun to work our way up the ladder.

Potomac Presbyterian Church has many financial commitments and necessary obligations but I hope that we continue to take our mission giving seriously and discover that by doing so we have received much more than we have given.

DLU

BREAKER 1-9, BREAKER 1-9. MEET ME AT THE CORNER OF RIVER AND GARY ROADS ON JUNE 4. THERE'S A STRAWBERRY FESTIVAL THERE YOU SHOULDN'T MISS. 10-4 ALL YOU GOOD PPC BUDDIES!

This is just one of many communications received from the Strawberry Lady about PPC's 3rd Annual Strawberry Festival. Here are more details for your calendar.

-Bring in your white elephants now! All new or good items (no clothing) will be happily accepted. Leave them in the narthex. Set up and pricing of these attic treasures scheduled for Thursday, June 2 beginning at 9:00 a.m. We need helping hands!

-Friday, June 3, beginning at 9:00 - set up of Fellowship Hall with craft tables, signs, decorations. Also strawberry cleaning at the same time. Those with table assignments, come with one white sheet to arrange your own table at 9:00. Strawberry pie fillers may pick up strawberries in the church kitchen that morning.

-Watch Willard the Weather Man, June 2 or 3; he'll be talking about our Festival!

-We need paper bags, all sizes.

-Saturday morning, June 4, workers should be at their stations before 11:00. Those without specific assignments must simply come and enjoy themselves. See the beautiful crafts created by just two dozen

ladies since January. There'll be a table full of dolls, another with gifts for the home, others for Fathers, Mothers, Teens, and Little Persons, as well as games and some Christmas items. The children will have to have a pony ride and a balloon after lunch! You can purchase hot dogs, ice cream, soft drinks and strawberries, as well as all kinds of bakery, homemade breads and jams - and we promise you a strawberry pie to take home!

Doesn't it sound great? And your attendance and support will help make possible all sorts of bright and beautiful things in the coming year at PPC.

See you at the Festival! June 4, 11:00-3:00.

JUNE 19 SUMMER SCHEDULE BEGINS - WORSHIP SERVICE AT 10:00

MAY 29 PENTECOST IN THE PARK - THIS SUNDAY! PPC will celebrate Pentecost at the Potomac Country Day School, South Glen Road at Norton Road. Meet there at 11:00 for worship. A family picnic and afternoon of games will follow. Bring your own main course, drinks, napkins, and something to share (salad, vegetable casserole or dessert). Barbeque grills will be furnished if you wish to cook. In case of rain, meet at the church for regular 11:00 worship. No Sunday School on this date

On Sunday, May 22, the congregation welcomed to membership the 1977 Confirmation Class: Mark Skinner, Neal Kuwabara, Charles Wade, Karen Roth, Christopher Roth, and William A. Johnston, III. Thanks to the Kronckes and Helmendachs who prepared a sumptuous breakfast for the class, their parents, and Session members that morning, and warmest congratulations to our six new members.

The congregation thanked the boys and girls of the King David Choir on May 22, in a formal recognition during which they received crosses and certificates from Choir Director, Jane Bourdow. Congratulations to: Brian Bentzen, Janis Bigler, Thomas Boogaard, Suzette Guffey, Anne Hawley, Jeanne Hazard, Michelle Hopkins, Tiffany Hopkins, Kathy King, Elizabeth Koonce, Kathleen Koonce, Dana MacGrath, Jeannine Maxwell, Beth Sherfy, Jodi Smith, Scott Smith, Heather Woodcock, Rick Woodcock, and Laurie Yates.

WORSHIP SERVICE/NURSERY COVERAGE/CHURCH SCHOOL REMINDERS

Sunday School grades K-6th will meet Sunday, June 12, for their final classes prior to the summer vacation. Also on this Sunday, a segment dedicated to expressing the congregation's appreciation of the 1976-77 teaching staff within each program level will be held prior to the Children's Sermon. As in the past, this day has been a significant Sunday on the church calendar, and hopefully on yours. Plan to attend with your family.

As noted elsewhere, the summer worship service schedule begins June 19 with worship held at 10:00. Nursery coverage will be provided throughout the summer. The Children's Sermon will be discontinued during the summer months.

Vacation Church School will again be offered jointly with several cluster churches, to be held at Bradley Hills Presbyterian Church July 11-15. More information is enclosed with your newsletter. Our Mary Cathey will be teaching the 5th/6th grades. Previous Vacation Church School programs have been well attended and proved to be an enjoyable mid-summer experience to children, encompassing Bible study, games, projects and organized fun. Enroll your child(ren) as soon as possible!

Looking WAY ahead, Church School will commence on September 11, as will the return to the 11:00 worship schedule.

Also looking WAY ahead, put September 11 on your calendar now. Another Septemberfest is coming your way. This year the event will be held at the new manse. More details in summer newsletters.

A New Member Orientation series began May 22. The 3-part series will continue on Sunday mornings, June 5 and 12, at 9:45 a.m., in Dr. Uhl's office. Prospective new members will meet with the Session on June 12 at 8:00 p.m. at Elder Ron Chaffee's home. If you wish to unite with the church at this time, please contact Dr. Uhl 299-6007, or Camille Kendall 424-7539.

AN INVITATION

Many are the things that need to be done and many are the places that need to be filled in the work of the church. It has been shown repeatedly that the vitality and vibrancy of a church is in direct proportion to the numbers of members who involve themselves in carrying out the work that is to be done. The willingness of individuals to "spend and be spent" in His service determines the witness that is made. Because each person has God-given gifts, there is a place for these gifts to be used. Please let the officers and staff of your church know what your talents are and where you would like to serve. You are needed as a unique and important part of the life of this congregation.

HELP WANTED!

Are you able to:

- Run a movie projector
- Help with arts or crafts, sewing, macrame, other
- Make a poster
- Help with dramatics, make sets, direct, sound or lights
- Type (even slowly or with two fingers)
- Play a musical instrument
- Make puppets
- Write original material

If you checked one of the above, two of the above, or all of the above, you can be of great help to the program of the church. Please let Mary Cathey know if you are willing to help by doing one task or several tasks. Great will be the appreciation!

Jane Bourdow will have openings this summer for piano students (also organ, if anyone is interested). Lessons may either be given at the church or in homes. Call her at home - 836-5665 - or at church.

LOOKING FOR DRIVERS. Do you drive Falls Road to Rockville Pike or by Rock Creek Nature Center off Military Road in your normal route to work? Two college girls need rides for the summer. If you can help, call Olie Howe, please, at 299-7761.

Dr. Uhl is offering a God and Country program for Boy Scouts. If interested, contact him at the church, 299-6007.

WEDDING BELLS. Linda Tennery and Richard Reish were married by Dr. Uhl at her parents' home on April 2, and Mary Louise Spears and Philip Thornton were married by Dr. Uhl at the church on April 15.

ATTENTION SENIOR HIGHS. The last meeting of the year will be a combination recreation, supper and planning meeting at the Howes on June 12. Present ninth graders are urged to come. Tennis is available for those interested. Time is 4:30-8:30; cost is \$2/person for a share of a six foot sub!

We are happy to have Mrs. Wenche Roth as our new audio visual coordinator. There is a sign-up sheet in the office if anyone desires to use the equipment. Please be sure to sign out any of the machines so that others who need to use them will know where the equipment is. Your cooperation is appreciated.

The last lecture in a series on "Alternatives for the Countryside" will be held on Thursday, June 16, at Stronghold Mansion on Sugarloaf Mountain which has been designated a national historic landmark. A picnic dinner will begin at 5:00 p.m. and the program at 7:00. The lectures are being conducted under a People Project grant under the direction of the Maryland Commission for Humanities and Public Policy. The organization, which deals with the philosophy, and environmental and ethical questions relating to the preservation of our cultural landscape, is presenting these lectures on such subjects as canoe trails, bike trails, farmland trails, barn trails, and historical fords. You may call 301-926-4510 for reservations, and Bob Fredlund at 762-8686 for more information. This program should be of interest to Potomacites concerned about their children's environmental future.

CHURCH CALENDAR
OF EVENTS

JUNE

1977

SUNDAY	MONDAY	TUESDAY	WEDNESDAY	THURSDAY	FRIDAY	SATURDAY
<p>5 9:45 Orientation 7-10's Program</p>	<p>6</p>	<p>7 10:00 Bible Study</p>	<p>8 8:00 Bible Study</p>	<p>9 8:00 Choir 7-10's Picnic</p>	<p>10</p>	<p>11 11:00-3:00 Everybody Comes to the Strawberry Festival!</p>
<p>12 9:45 Orientation 8:00 New Member Seminar at Chafee's. Last day of church school</p>	<p>13 8:00 Committees</p>	<p>14 10:00 Bible Study</p>	<p>15 8:00 Bible Study</p>	<p>16 8:00 Choir</p>	<p>17</p>	<p>18</p>
<p>19 10:00 service New Member Recognition</p>	<p>20 8:00 Session</p>	<p>21</p>	<p>22</p>	<p>23</p>	<p>24</p>	<p>25</p>
<p>26</p>	<p>27</p>	<p>28</p>	<p>29</p>	<p>30</p>		

100

100

100

100

100

100

100

100

100

100

100

100

100

100

100

100

100

100

100

100

100

100

100

100

100

100

100

100

100

100

100

100

100

100

100

100

100

100

100

100

100

100

100

100

100

100

100

100

STEEPLE TO PEOPLE

POTOMAC
PRESBYTERIAN CHURCH
POTOMAC, MARYLAND

JUNE

1977

FROM THE DESK OF DR. UHL . . .

After an extended period of feeling left out, I finally took the plunge last week and began to learn the sport of tennis. I must underscore the word "began" so you are aware of the progress I made. The lessons were gratifying to the point that I went shopping Thursday evening and came home with all the necessary equipment. All that means, however, is that now if I want to play, I don't have to wear my old Converse basketball shoes or borrow a racket.

The lessons were designed to teach me the basic fundamentals of the game but as with any sport, I quickly discovered that knowing what to do and doing it are two different things. I can already tell that most of it is going to be a matter of practice and hard work.

There are some lessons here and they're really not difficult to find. Our lives as Christians are not unlike my beginning experience with tennis. It's never enough just to know what we ought to do - that's easy. The hard part comes in the doing of it. We may know all about our faith in our heads but unless we practice that faith in our lives it is of no use to us.

The second lesson is that like tennis our lives as Christians demand some hard work from us. The religious word for this is commitment. I discovered that the longer I played and the more I learned about tennis, the more intense I became about the game. To listen to many of you talk about the sport, I get the impression that's the way you feel also. I wonder what would happen if we approached the Christian life in the same manner.

Tennis anyone?

DLU

REMEMBER US ALL SUMMER

If you plan to be out of town this summer or away for a weekend, please try to keep your pledges up to date. Think about giving early in the summer before those vacation bills pile up and make it difficult in the fall.

Remember, your church's financial requirements go on throughout the summer. Make it easy on all of us.

Envelopes are enclosed here for your mail-in convenience while you're away.

A STRAWBERRY THANK YOU LETTER

Having recovered now from PPC's Third Strawberry Festival (and with the Fourth beginning to glimmer in my mind), it's appropriate for me to have a few words with my readers. I've been receiving many thank you's and congratulations and all that jazz (without which none of us survive, of course, and how I appreciate your kindnesses); however, let me set you straight. All I did was make a few plans - but I did NOT knit, paint, bake, cashier, clean strawberries, scoop ice cream, mix orange drinks, visit Willard Scott, write publicity letters donate plates and napkins, sell white elephants, hang decorations, walk ponies, fill balloons (I could go on and on) ... the many beautiful people of this church family did these things. And, now I say to each of you, go look in your mirrors and say, "Thank you". There would be no Festival without all your smiling help. And because of your willingness to give of yourselves, PPC has almost \$1500 more for mission giving in the coming year, the ladies will be able to fulfill some of their special dream projects at the church, and there is adequate seed fund waiting to sprout Festival '78.

With strawberry love to you, *Lynne*

P.S. And a golden strawberry to my co-chairlady, Maddy Saxton, who was always there with her support.

THANKS ALSO TO THE PIE PEOPLE

These ladies are so special they deserve a headline and an article all their own! Hopefully, our Festival reputation will continue to grow much on the basis of our strawberry pies. Thanks to these bakers who created over 100 pies for us: Elaine Skinner, Janet Clark, Dort Hall, Miriam Wade, Sherri Willetts, Sherri Sharp, Dee Chaffee, Joann Schilling, Wanda Guffey, Heather Thomas, Jan Malone, Carolyn Meakem, Dawn Thompson, Tay Sawyer, Pat Maxwell, Doris Yates, Julie Wye, Estell Woodcock, Barbara Shaffer, Jackie Evans, and Estelle Thompson.

TRY A PIE

Our strawberry pie recipe is included here so that you may try your own at home.

1 quart plus 1 cup fresh strawberries
1 cup sugar
3 tablespoons cornstarch
 $\frac{1}{2}$ cup water

Hull berries and drain thoroughly. Crush enough to make one cup. Combine sugar and cornstarch. Stir in water and crushed berries. Cook over medium heat, stirring, until mixture comes to a boil. Reduce heat to low and cook, stirring for 2 minutes. The mixture should be thickened and translucent. Set aside to cool. Place whole berries in baked pie shell, reserving the prettiest for the top. Pour cooled glaze over evenly and chill for about two hours. (Tip: prick the unbaked shell with a fork especially in the area where the bottom meets the side.) After initial cooling and chilling of the finished pie, it should be eaten immediately.

THE PPC SHOPPING DEPARTMENT

Following is a list of leftovers from the Festival craft tables, reduced in price. Whenever a birthday, house-warming, anniversary, or whatever gift need arises, think of your church first. Call Lynn Bigler at 983-1682 to see or obtain any of these items.

4 Pop-Up Puppets	15.00
2 afghans	.75
1 silk scarf (green/white dots)	.50
2 decorated wig stands	10.00
1 ceramic Christmas tree (sells for \$37 in catalogs)	1.00
14 recipe books	.50
3 match boxes	1.25
10 small straw dolls	8.50
1 stuffed lamb	.75
1 red terry lobster bib	22.00
1 baby afghan (yellow/white)	2.00
5 Christmas stockings	.25
5 gold crowns (good for birthday parties)	5.00
1 cutting board (round with blue bunting)	1.00
6 whisks filled with straw, egg, flowers	.25
5 nylon net scrubbers	.75
2 red apple string holders	3.50
1 green/white check terry apron, 2 potholders, and toaster cover	1.25/1.50
2 snap-on hand towels (olive, black)	6.00
1-9 piece placemat set (green/yellow)	1.00
1 tea cozy (coral)	1.00
1 railroad cap	2.75
2 stuffed elephants	.75
1 tooth fairy pillow	.50
2 bean bags	1.00
1 crocheted girl's purse (aqua/white)	.75
1 tennis visor hat (peach)	1.00
1 plaster Holly Hobbie doll	2.00
8 wooden spoon dolls	7.00
4 large raffia dolls	20.00
3 wooden barn puses (2 painted/1 decoupage)	15.00
1 crocheted cape (black/yellow roses)	10.00
2 stuffed, braided Christmas wreaths	4.00
1 long lace hostess apron	4.00
some long polyester skirts	6.00
some girls' dresses/bonnets	.50
2 curtain ring scenes	4.00
2 bridge cloths (olive, wine)	

Punch will be served in the narthex following each 10:00 summer service. There will be nursery coverage provided each Sunday.

July 10 - Summer Communion

ALSO July 10, 7:00 p.m., on the patio outside the main entrance - "ICE CREAM AND OLD HYMNS", sponsored by the Congregational Life Committee and hosted by the Mawleys and the Bentzens. Come join in the old-fashioned fun. A small fee will be charged.

Bouquets go to the SEVENTEENS who did a splendid job of writing and producing their spring production "Of Saints and Sinners". It was very original and clever while providing an opportunity for actors and audience alike to laugh at our human failings. Special appreciation goes to all who helped and to all who came in support of the junior high school program.

There are registration blanks for VACATION CHURCH SCHOOL for any who may wish to get them in the church office. The school is to be held at Bradley Hills Presbyterian Church, July 11-15. A variety of interesting and very worthwhile things is being planned. If there are questions, please call Mary Cathey at the church office or at her home. The theme for the week is "Created for Love".

SUMMER OFFICE HOURS for Mrs. Cathey will be Tuesdays, wednesdays and Thursdays from 9:30-4:00 in addition to Sunday mornings.

The following NEW MEMBERS were received by the Session on Sunday evening, June 12, at the home of Elder Ron Chaffee and recognized by the congregation on Sunday, June 19. We are most happy to welcome them into our church membership.

Mr. and Mrs. E. Eugene Sharer (Wilma) and daughter Karen, 12404 Beall Spring Road, 926-4090. Gene and Wilma were reinstated as active members of this church after being away from this area for three years. Karen comes to us by Transfer of Membership from the First Christian Church, Thousand Oaks, California. In addition to Karen, the Sharers have three sons: Mark, David and Andrew. Gene is with I.B.M. (Marcia Boogaard's parish group).

Mr. David Smith, 8717 Wandering Trail, 424-0634. David comes to us by Transfer of Membership from the Rockville United Church of Rockville, Maryland. David is married to Marie Louise Smith and they have four children: Douglas, Nancy, Scott and Connie. David is with Computer Sciences Corporation. (Ann Hazard's parish group).

Mr. and Mrs. Tom Washing (Lou Ann), 8001 Coach. Tom and Lou Ann come to us by Reaffirmation of Faith. The washings have two sons, Whitney and Jason. Tom is a lawyer. (Bill Hutchison's parish group).

Needed: 2 window SCREENS for the library. 34" x 50 $\frac{1}{2}$ ". Call Bill King if you have same not in use and are willing to donate.

HOMES AND HOSPITALITY needed for a group of Norwegian Boy Scouts coming to this area July 25 for 3-4 days. H & H also needed August 19-20 for scout leaders visiting here from all over the world. Contact Bob Fredlund at 762-8686 if you can help.

Note in the July copy of National Geographic an article entitled, "Turkey: Crossfire at an Ancient Crossroads", written by our own BOB JORDAN.

DR. UHL was recently elected to the Board of Directors of the Potomac Conservation Foundation. Congratulations, David!

The Congregational Life Committee is beginning now to make some plans for the summer of 1978 for a CONGREGATIONAL FAMILY OVERNIGHT. Your comments and suggestions on the subject are solicited. Please contact Anne Hazard or Jon Hawley with your ideas. If you'd really enjoy getting in on the planning of this event, join the Congregational Life Committee meetings when they resume in September!

Another SEPTEMBERFEST reminder. September 11 is the date, 5-8:00 p.m. is the time, the new manse will be the location. Don't miss this highlight of the Potomac fall social scene! Mark your calendar now.

Anyone willing to contribute WARMING TRAYS for Septemberfest use, please contact Dee Chaffee.

GODSPEED SERVICES were held recently for the Wades and the Halls. As requested, here are the addresses of the families who have left PPC this year.

Mr. and Mrs. Ormand J. Wade (Brud and Miriam)
Mathews Drive
Bedminster, New Jersey 07921

Mr. and Mrs. Asaph H. Hall (Dort)
3003 Westham Drive
Town and Country, Missouri 63131

Mr. and Mrs. William E. Hoge
582 Indian Lake Road
Hendersonville, Tennessee 37075

Mr. and Mrs. Aaron Cross (Mary Margaret)
28 Les Dergers de La Ranchere
St. Nomla Breteche, France 78860

After June 25, Dr. Uhl will be in residence at the NEW MANSE, 1987 Lancashire Drive, Potomac Woods.

NEEDED: Host families for high school students from Spain who will be studying and learning more about American culture. The Foreign Study League is bringing these students to Potomac August 2nd to September 3rd. The program is excellent and well planned for all. For more information, contact Mrs. Elizabeth Groner at 299-6909, or Marty MacDonald at 299-2593. See notice on bulletin board for more details.

The first part of the document discusses the importance of maintaining accurate records of all transactions and activities. It emphasizes the need for transparency and accountability in financial reporting.

It is essential to ensure that all data is properly documented and stored in a secure manner. This includes maintaining backup copies and implementing robust security protocols.

The document also highlights the role of technology in streamlining operations and improving efficiency. Investing in modern software solutions can significantly reduce manual errors and save time.

Regular audits and reviews are crucial for identifying potential issues and ensuring compliance with relevant regulations. This helps in maintaining the integrity of the organization's financial statements.

Effective communication and collaboration among all stakeholders are key to the success of any project. Regular meetings and clear reporting structures are necessary for staying on track.

File - 1 for June

The following table provides a summary of the key findings and recommendations from the recent audit. It is intended to serve as a reference for all relevant departments.

Key findings include discrepancies in the reporting of certain expenses and a need for more frequent reconciliations. Recommendations focus on improving data entry accuracy and enhancing internal controls.

It is recommended that the finance department implement a new system for tracking expenses in real-time. This will help in identifying and correcting errors more quickly.

Management is expected to review the audit report and take appropriate action to address the identified issues. Progress should be reported to the board at the next meeting.

The audit team has provided detailed documentation of all findings and evidence. This information is available for review upon request to ensure full transparency.

Thank you for your attention to this matter. We are confident that the implemented changes will lead to a more robust and reliable financial reporting process.

An Open Letter to the Congregation:

To say we were surprised by your generosity is an understatement. We came to the songfest on Sunday night, July the tenth, to have an enjoyable evening of fun and fellowship - but what we found was totally unexpected.

For the beautiful silver tray, the cake and the check we say thank to all of you. We hope that when you come to Septemberfest at the manse you will see some evidences of your gift.

So, from the folks at the Uhl house, please accept our warmest regards and our appreciation for each of you.

Sue, David and Jay

On September 6, our founding pastor and his wife, Dr. and Mrs. James K. Leitch, will celebrate their 50th wedding anniversary. Those who would like to remember Jim and Helen on this occasion may send a card or letter to them at: 833 Galen Drive, State College, Pennsylvania 1680.

A 3-part orientation series for prospective new members will be held in the church library at 9:45 a.m. on Sunday mornings September 25, October 2 and October 9. New members will meet with the Session on Sunday, October 9, and be recognized at the 11:00 service on October 16. Anyone wishing to unite with the church please call Rev. Uhl 299-6007 or Camille Kendall 424-7539.

"Vacation Ventures", our Vacation Church School for this summer, was extremely successful in terms of participation and learning. PPC joined forces with Geneva and Bradley Hills Presbyterian to offer a fine week of Christian education for the young people of the three churches. There were 85 participants and 18 teachers. Of that number 16 were from our congregation. Those participating were: Patrick Lee Malone, Jason Sullivan, Teri Woodard, Daphne Boogaard, Vicki Malone, Kacie Woodard, Sandy Sullivan, Kathy Sanders, Thomas Boogaard, Danny Malone, David Malone, Kathy King, and Mrs. Cathey. A very good week was enjoyed by all!

Unfortunately, choir directors never really go on vacation! Although it looks and certainly feels like summer, plans are already percolating for the choir schedule for fall, and although they're as yet very tentative, it's not really too soon to mention them and perhaps get some input. Due to the distinct possibility of there being church school classes for junior and senior highs on Sunday mornings, the suggestion has been made to hold Joyful Noise rehearsals on Thursday evenings from 7:00-7:45, right after the 7-10's program. This would enable the King David Choir to slip into the former Joyful Noise time slot at 9:45 on Sunday morning. We realize that this will lengthen the time that these children spend at church on Sundays, but in the opinion of their slightly prejudiced choir director, they deserve some extra time! There are many worthwhile musical activities that we haven't had time for before, and usually there's so much going on that any length rehearsal seems too short! Please bear in mind that all these plans are tentative as yet, and don't hesitate to let me know any ideas that you choir parents and members have.

-Jane Bourdow

Does the part of the church grounds you chose need your attention? Or are you willing to give an hour or so each week to help keep the grounds beautiful? Please call Marcia Boogaard 762-1035 if interested.

Those strawberry people among us just don't give up. The ladies are continuing to meet for craft work throughout the summer, each Wednesday morning from 9-11:00. Watch the Sunday bulletin for locations. Already they are on the lookout for some of your special throw-aways such as: 1 gallon bleach bottles, old nylons, 1 gallon cider jugs, broken broomstick handles, yarn and fabric scraps. Please leave any donations in the church office marked "Strawberry Festival". All interested ladies are invited to join in the fun and fellowship on Wednesdays.

Mrs. Wenche Roth is in charge of audio visual equipment and materials for the church. All of the equipment has been labelled and arranged in the audio visuals cabinet. By fall there will be a listing of all material belonging to the church along with catalogues and additional available materials for use. If you have questions or wish to schedule equipment for use, please get in touch with Wenche at 424-3622. We are grateful for Wenche's help in organizing this portion of our church's resources.

Congratulations to Bob Fredlund and Bill Skinner! Bob has been appointed chairman of the Activities Committee for the Potomac District of the National Capital Area Council, Boy Scouts of America. The Activities Committee coordinates general district-wide functions each year for the 121 troops and packs in the western half of Montgomery County. Bill was recently elected chairman of the District for the coming year.

Thanks to Marti MacDonald and Sue Kuwabara for the beautiful greenery boxes in the sanctuary.

Septemberfest reminder: September 11, 6-9:00 p.m., at the manse. Save that date on your calendar and join us in fellowship.

Punch is served in the narthex each Sunday morning during the summer following the worship service. Nursery care will be provided throughout the summer. Worship is at 10:00.

The Christian Education: Shared Approaches Committee is meeting regularly through the summer in order to complete its assignment for curriculum material for our church. Progress is being made and the committee is happy to report this to the congregation. The next meeting will be on August 10 at 7:30 p.m.

Latest report on the pictorial church directory indicates we may expect it to be delivered some time in September.

Children and adults are at NIH with leukemia, aplastic anemia and other serious blood diseases. They desperately need blood platelet matches in order to live. The odds of such a match are 1 in 4725! If you are between 18 and 60 years and in good health, let NIH test your blood to see if you match. This in no way interferes with any regular blood donor program. For more information or an appointment, call 496-2022 anytime - day or night. See the folder on the church bulletin board and/or talk to Joy Garcia who has participated several times in this donor program.

On Saturday, August 27, 1977, a matinee performance at 2:00 p.m. of SOUTH PACIFIC with Howard Keel and Jane Powell is being sponsored as a benefit for the Presbyterian Home Building Fund by the Women's Board of the Home. Tickets are available at \$7.00, \$8.00 and \$9.00 each, depending upon seating. In addition, sponsorships are available at \$15.00 for one and \$25.00 for two. The names of the sponsors will be published. Round trip bus service is being arranged from the parking lot of National Presbyterian Church to Wolf Trap Park at a cost of \$3.00 each. This must be arranged in advance. For an enjoyable afternoon and an opportunity to support the Presbyterian Home, call 363-6110 for tickets.

The Long Range Planning Committee, continuing its work during the summer, asks your cooperation in their information-gathering process. Please complete the form enclosed with this issue of the newsletter and return it by August 14. It may be placed in the collection plate any Sunday, left in the church office, or mailed in. The committee appreciates your helpfulness and thanks you for taking a few minutes to fill in the questionnaire.

During the next month, you should see some additions around PPC. The ladies of the church, using their Strawberry Festival funds, have purchased room darkening shades for Fellowship Hall. And for our youth, a basketball pole, backboard and rim will be installed on the grounds.

STEEPLE TO PEOPLE

POTOMAC
PRESBYTERIAN CHURCH
POTOMAC, MARYLAND

SEPTEMBER

1977

FROM DR. UHL'S DESK . . .

As I write this I am contemplating the third and final segment of our vacation this year. The first two were just fantastic - a week in Colorado and a week at the beach. Now we are just about ready for the last part. But that's what has me worried.

The name sounds as glamorous as the first two - Shenandoah Acres Resort. What could be more beautiful than a week at a lovely resort which is nestled in the Blue Ridge Mountains adjacent to the Skyline Drive. But there is a catch - Shenandoah Acres Resort is a campground.

In order to understand my apprehension you must realize that my idea of camping is one week at Greenbriar. But I am going to give it a try - tent, Coleman stove, lantern and all the rest. Sue keeps telling me how much I am going to love it and how rested I will be. So it's worth a try. Anyway, if it really gets bad, Greenbriar's not far away.

Seriously, I hope each of you has had an enjoyable summer. I am eagerly looking forward to September 11th which is the beginning of our fall schedule at church, and Septemberfest that evening at the manse. My hope is that we all do begin this fall rested and eager for the new church year.

RETURN TO 11:00 A.M. WORSHIP SERVICE - SEPTEMBER 11, 1977

CHURCH SCHOOL BEGINS SEPTEMBER 11, 1977

SEPTEMBERFEST - SEPTEMBER 11, 1977, AT THE MANSE, 6:00 - 9:00 P.M.

NEW MEMBER ORIENTATION SERIES SCHEDULED

A three-part orientation series for prospective new members will be held in the church library at 9:45 a.m. on Sunday morning, September 25, October 2, and October 9. New members will meet with the Session on Sunday, October 9, and be recognized at the 11:00 service on October 16. Anyone wishing to unite with the church please call Rev. Uhl at 299-6007 or Camille Kendall at 424-7539.

FROM THE EDUCATION DEPARTMENT. . .

Church school will begin Sunday, September 11, 1977, at 11:00 a.m. Similar to the 1976-77 schedule, children should enter the sanctuary with parents to begin the hour of worship. Dr. Uhl will commence his Children's Sermon during the service, after which teachers and children will adjourn to their respective classrooms.

A teacher recognition service will be held during this first Sunday whereby members of the entire Christian Education Staff will be introduced to the congregation.

Nursery coverage will be available during this hour.

In an effort to provide a wider opportunity for children, youth, and adults of the congregation to participate in the activities of the church, the program for Sunday mornings is being expanded. Many adults do not participate in Lay Education because there is no concurrent class for their children. Beginning September 18, there will be nursery coverage, an enrichment hour (grades K-6), a junior high, and a senior high Sunday school class. The youth classes are offered in addition to 7-10's and the senior high evening group because school and/or athletic schedules sometimes prevent participation. We welcome all who would share in this educational effort of the church.

Lay Education is to begin Sunday, September 18, at 9:40 a.m. Dr. Uhl will lead a Bible study on the Psalms. All adults in the congregation who are interested in participating are asked to sign up on Sunday, September 11. Registration forms will be on the table in the narthex.

Concurrent with the Lay Education, there will be an enrichment Program led by Mrs. Sue Uhl for children from kindergarten age through sixth grade (nursery will also be provided) so that parents may be a part of the Lay Education class.

There will also be classes for junior highs and senior highs at the 9:40 a.m. hour.

On September 18, at 9:40 a.m., the Senior Highs will begin their Sunday morning class of Bible study and discussion. We are happy to announce that Mr. Tom Farrar will lead the group. Mr. Farrar comes to us from a previous church association with young people. We welcome him to this teaching assignment in our church.

Seventens will begin the fall schedule with a dessert for parents and young people on Thursday, September 15, at 7:30 p.m. for one hour, in the Fellowship Room. This time will be a get-acquainted session with a preview of the year's plans for learning and fun together. Mark your calendar now.

On Sunday, September 18, the junior highs will also have a class at 9:40 a.m. that is to be continued through the year. Mrs. Barbara Shaffer is to be in charge of the morning group. We are happy to have her enthusiastic, dedicated leadership.

The Senior High evening program will begin September 18 and will be held at Barb King's house, 8912 Saddle Lane (Fox Hills west) from 6:30-8:15 p.m. All 10th, 11th and 12th graders are urged to come. The fall program will include units on relationships, values and a seminar on the elderly led by the Reverend Lincoln Dring, Director of the Community Ministry of Montgomery County.

Attention: Parents of College Students - If your son or daughter away at college would be interested in receiving a letter to People throughout the year at school, please give their address to Mrs. Hart, Church Secretary.

WHAT ELSE BUT LABOR ON LABOR DAY WEEKEND?

Bill King has devised a fun way for you to really celebrate the Labor Day weekend! Meet him at the church on Saturday, September 3 to lay carpeting, hang window shades, and best of all paint the downstairs classrooms!!! Bring your own roller and paint tray, if you're lucky enough to have same. If not, just bring your warm body.

A SPECIAL THANK YOU for Joyce Jenkins for being our guest organist during the month of August and September 4, during Jane Bourdow's absence. We also gratefully thank Gary Durfee, Mary Cathey, and Lon Dring for their guest appearances in our pulpit.

As David and Sue Uhl have expressed at every opportunity, they are deeply grateful for the wedding gifts they received from our members. Those of you who attended our July 10th Hymnfest know that at that time we presented to the Uhls an engraved silver tray and a check for \$652.00 from the congregation. Since that time, I have passed along to them an additional \$160.00 in gift funds. I appreciate your cooperation in this expression of our love and best wishes to our pastor and his family

- Jon Hawley, Chairman
Congregational Life Committee

WEDDING CONGRATULATIONS!

Kathy Garcia and John Pegues were married on August 13 in the Presbyterian Church in Warrenton, Virginia. They will reside in Warrenton where Kathy teaches at the Fauquier County High School and John is the assistant principal at Culpepper High School and Director of Athletics for the Culpepper County Schools.

On August 20, Ginger Lewis was married to William (Ben) Hubbard. Our congratulations and best wishes to both couples.

SUMMER CRAFT MEETINGS TO CONTINUE AT THE CHURCH IN SEPTEMBER

A dedicated group of ladies has continued all summer with preparations for the 1978 Strawberry Festival. Many craft projects are already completed! The group will meet at 9:30 each Wednesday at the church beginning September 7. Those in Bible Study that morning are urged to join the craft group immediately after their class.

The ladies are always in need of your scraps, laces, trims, buttons, fabrics of all kinds, old nylon stockings, one gallon bleach bottles - our motto is "Don't Throw It Away - We Can Use It". All members of the congregation and friends are invited to join the Wednesday morning no-talent-needed group! Please come for lots of fun!

Recently purchased for the church from the ladies' Festival profits was a set of ancient world maps, tripod and charthead for use in Bible studies.

CHURCH CALENDAR
OF EVENTS

SEPTEMBER

1977

SUNDAY	MONDAY	TUESDAY	WEDNESDAY	THURSDAY	FRIDAY	SATURDAY
4 Lon Dring to preach	5	6 SCHOOL OPENS	7 Crafts 9:30 Long Range Com. 7:30 Warner Memorial 7:45-10:00 for Sunday school teachers	8	9	10
11 11:00 Church, Church School 6-9:00 Septemberfest	12 Committees 8:00	13 NO SCHOOL	14 Bible Study 9:00 Crafts 9:30 Long Range 7:30 7:30 Shared Approaches	15 Choir 8:00 7-10's and Parents 7:30	16	17
18 9:40 Lay Ed. 6:30 Sr. Highs at King's	19 Session 8:00	20	21 Bible Study 9:00 Crafts 9:30 Long Range 7:30	22 NO SCHOOL Choir 8:00	23	24
25 9:45 New Mem. Orientation 6:30 Sr. Highs at O'Neill's	26	27	28 Bible Study 9:00 Crafts 9:30 Long Range 7:30	29 Choir 8:00 7-10's 4:30	30 8:00 Square Keelers Square Dance Club	3 Bill King's Labor Day at the church!

STEEPLE TO PEOPLE

POTOMAC
PRESBYTERIAN CHURCH
POTOMAC, MARYLAND

OCTOBER

1977

FROM DR. UHL . . .

If the month of September is any indication, this promises to be an exceptional year for Potomac Presbyterian Church. Your response to our fall planning has been fantastic. The new 9:45 church school programs have exceeded our expectations and the traditional 11:00 church school is stronger than ever. In every phase of the fall schedule, we seem to be off to very positive beginnings.

The months of October and November are extremely critical for us. Early in October, the Session will receive the report of the Long Range Planning Committee. The results of this report may have far reaching implications for this congregation. Then also in October and November we will have our stewardship campaign for 1978. When you add to these the election of Elders (also in October), special services of worship (October - World Wide Communion Sunday, Reformation Sunday; November - Youth Sunday, Thanksgiving), two retreats (Junior-Senior Highs in October and Session retreat in November), weekly Bible Study, 7-10's on Thursdays, Senior High Fellowship on Sunday evenings, Strawberry Festival crafts each Wednesday, three choirs, Singles and Doubles monthly committee and Session meetings, you get some idea of the vitality of our church and the importance of the next couple of months.

The key to the life of this congregation is you and all of its activities. The congregation exists to serve its members, its community and its world. Let me encourage each of you to become a vital part of your church so that together we can realize the promise which the fall holds for us.

-DLU

A CONGREGATIONAL MEETING will be held October 23, immediately following the 11:00 service, for the purpose of electing new Elders and receiving the 1978 budget.

WORLD-WIDE COMMUNION SUNDAY is October 2. A special service has been planned. In addition, following the service, there will be an INTERNATIONAL COFFEE served in the Fellowship Room by Lynn Bigler, Coordinator, and the following ladies who are baking goodies from around the world: Kathy McMahon, Virginia Fredlund, Dawn Thompson, Peg Hawley, Martha Bentzen, Sue Kuwabara, Velma Killion and Wenche Roth.

CHRISTIAN EDUCATION: SHARED APPROACHES - A PROGRESS REPORT

The CE:SA Curriculum Study Committee has continued to meet throughout the summer months in planning, evaluating and fact-finding sessions. Nine members on the committee have been involved with acquainting themselves with each course of learning, or Approach, of which there are four:

Knowing the Word
Interpreting the Word
Living the word
Doing the word

A visit to The Source in College Park (Presbytery's "library" of resource materials) provided the committee with its first review of curriculum content and components: design, teaching/learning opportunities, leadership support and resources. Additional CE:SA reviews will be scheduled as new information becomes available from presbytery.

In the interim, the research and evaluation effort has had first to address the educational programs offered to the congregation by the Christian Education Committee over the past two years. This information has been charted and summarized along with the results of a committee survey dealing with three concerns: (1) why people don't participate (in educational programs), (2) what people find in our programs, and (3) Attitudes and situation in our church.

The Potomac Presbyterian Church's teaching and learning characteristics require understanding; how they encompass different age groupings and levels of interest within the congregation. This knowledge will form the basis, along with other variables, by which the committee will ultimately recommend to the Session (and to the congregation) those pathways of the CE:SA experience most compatible and adaptable to the future growth of Christian education in the church.

Correspondence and publicity regarding this total overview of educational ministry will be forthcoming over the next three to four months. Watch for bulletin inserts, bulletin board and Steeple to People reports.

PPCpPCPPCpPCPPCpPCPPCpPCPPCpPCPPCpPCPPCpPCPPCpPCPPCpPCPPCpPCPPCpPCPPC

EDUCATIONAL PROGRAM OF THE CHURCH

The church school has gotten off to a fine, well-attended beginning. Because participation is such a vital part of a program, we are grateful for the commitment of those who give time in coming to the classes which are offered. By the same measure we wish to recognize those persons who have made a commitment to the teaching ministry of our church:

Visual Aids Coordinator - wenché Roth
Nursery Coordinator - Eleanor Sawyer
Kindergarten - Diane Norcross, Shelley Smith, Estelle Thompson
1st & 2nd grade - Celia Sullivan, Charlene Brumbaugh, Mary Lee Malone, Barbara King
3rd & 4th grade - Winnie Brill, Linda Sweeney, Mary Alice Crockett
5th & 6th grade - Betty Topercer, Ilda Lee, Wanda Sherfy, Doris Yates
Substitutes - Claudia Bergsma, Joyce Jenkine, Joan Robisch, Rachel Harwell
Junior High - Marion Hutchison, Calvin Roonce, David Uhl, Dawn Thompson, Tom washing, Jane Bourdow, Mary Cathey

Senior High - Tom Farrar, Olie Howe, Jim Gregg, Tom Meakem, Dave
Smith, David Uhl, Mary Cathey
Enrichment Program 9:40 - Sue Uhl, Coordinator
Junior High 9:40 class - Barbara Shaffer
Senior High 9:40 class - Tom Farrar
Superintendent of Church School and Chairman of the Christian
Education Committee - Bill Hutchison

May our Lord bless all of us in our dedication to His work.
PPCpccPPCpccPPCpccPPCpccPPCpccPPCpccPPCpccPPCpccPPCpccPPCpccPPCpccPPC

OFFICE HOURS FOR D.C.E.

Mrs. Cathey will have the following office hours for the winter
months:

Monday 9:30-3:30 (except second Monday, then 1:30-5:50)
Thursday 10:00-8:00
Sunday 9:15-12:45 (or as long as needed)
6:30 until end of Senior Highs

Appointments and meetings may be scheduled on other days. If a
school holiday falls on a working day, check with Mrs. Cathey before
coming into the office.

PPCpccPPCpccPPCpccPPCpccPPCpccPPCpccPPCpccPPCpccPPCpccPPCpccPPCpccPPC

7-10's ARE WINNERS

And they proved it twice in one week! On Thursday evening,
September 15, sixty junior highs and their parents met in Fellowship
Hall to talk about the 7-10's program for the school year. There
were introductions, explanations, and a question and answer time fol-
lowed by dessert. It was great to see such support.

On Sunday morning, September 18, Mrs. Barb Shaffer (with the
assistance of her husband Dick) greeted fifteen junior highs for Sun-
day School at 9:40 a.m. In the first meeting of the group things
got off to a super start.

All junior highs of the church are invited to come and partici-
pate in both of the programs designed for them. Since programs suc-
ceed in direct ratio to the interest and concern of the adults, we
thank you for your help in getting things off to a winning beginning!

7-10's ARE winners! COME JOIN THEM!

P.S. Don't forget that checks for the supper fund are being
happily received. They may be left in the office or sent with your
7-10 on Thursday evening.

PPCpccPPCpccPPCpccPPCpccPPCpccPPCpccPPCpccPPCpccPPCpccPPCpccPPCpccPPC

FALL RETREAT

Fall retreat for Junior and Senior Highs is being held at Camp
Glenkirk, October 7-9. Letters and registration cards have been sent
to all young people in this age group. If by some chance the mailing
did not reach all intended, cards can be picked up in the office.
Registration and payment are due by OCTOBER 3. We are hoping for a
large turn out!

Remember, October 3 is the deadline for retreat registration and
payment. Register right away and don't miss out on any of the fun
planned.

PRESBYTERY WORKSHOPS

Junior High Leaders-September 30-October 1
Senior High Leaders-October 7-8
Advent-October 15
More information is on the hall bulletin board.

SENIOR HIGHS

Each year, National Capital Union Presbytery sponsors an International Affairs Seminar at the United Nations for senior high youth of our area. This year's seminar will be held November 8-12, emphasizing the need for Christian involvement in the pressing issues of our nation and our world. This year's focus will be on the issue of power and powerlessness. Highlights will be briefings with U.S. personnel and leaders from the Middle East, a tour of New York City and a Broadway play. Limited to 40 on a first-come basis and to those with acceptable grades, the total cost is \$80.00.

A SEPTEMBERFEST THANK YOU

From Dee Chaffee, Septemberfest Coordinator, a big thank you for those on the Congregational Life Committee for all their help in planning this event (and cleaning up!). And a special thanks to all those who donated the delicious foods we all enjoyed.

And to Dee Chaffee, the congregation sends its thanks for all her excellent planning which made our second Septemberfest such a success. There were over 140 guests at this event.

Last, but certainly not least, we all want David and Sue Uhl to know how we appreciate their having this Septemberfest at their new home. Everyone enjoyed having a look at the new manse.

SINGLES AND DOUBLES CLUB PROGRESSIVE DINNER

Date and time: Friday, October 21, 1977, at 7:00 p.m.
Cocktails: Bob and Jane Jordan's, 9717 Brimfield Court
Dinner: Ron and Dee Chaffee's, 9712 Brimfield Court
Dessert: Bob and Doris Yates', 9421 Winterset Drive

Reservations should be made by Tuesday, October 18 at \$3.00 per person. Call Dee at 299-2469 or Doris at 340-7277 for your food assignment.

The Square Reelers Square Dance Club will hold its second dance of the year on Friday, October 28, at 8:00 p.m. in the Fellowship Room. If you are interested in dancing or learning to dance, we invite you to join us. Instructions will be given. Beginners welcome! For further information, call Mary Lou Thornton at 279-2775 or Velma Killion at 299-5442.

ALL JUNIOR AND SENIOR HIGHS: You have a very special opportunity to be a part of something very good. The Sunday School classes for both groups are being held at 9:40 a.m. Sunday mornings. Come join the fellowship and the fun time of learning.

Our thanks are due to the enthusiastic painting crew who labored for two Saturdays in September to paint all the downstairs classrooms and hallway. Brush swingers, we love ya! Bo Heininger, Mike Bentzen, Briwn Bentzen, Mary Lee Malone, Bill Hutchison, Bob Jenkins, Calvin Koonce, Bill Lincoln, Don and Dawn Thompson, Walter Maxwell, Weldon MacDonald, Bill Brill, Dick Shaffer, Bill Sawyer, Bill Skinner, Bill Topercer, and, of course, Bill King who is famous for organizing all such fun events at PPC!

AT PPC, IT'S TRA-LA-LA, NOT HO-HUM

Another musical year has begun! Hopefully it will be another year of growth, innovation, and learning. In case you've forgotten, some changes have been made in the rehearsal schedule. The King David Choir now practices on Sunday mornings at 9:40. This choir is for young people in grades 2-6; its activities include hymn study, basic training in singing, and monthly participation in church services. This Thursday, the Joyful Noise, for junior high aged young people will meet for the first time at 7:00 p.m. following the 7-10's program. (Participation in 7-10's is not a prerequisite for Joyful Noise membership!). The nucleus of any choir program is the adult choir, and if you are high school age or above and can carry a tune, the Sanctuary Choir wants you! Quantity doesn't always mean quality, but in a choir it helps! Thursday at 8:00 is the day and time.

Our Hymn of the Month program has already added one new hymn to our congregation's "repertoire". This can be an exciting learning experience for everyone as we learn about the hymns from the excellent materials prepared by our denomination, and learn to sing them through repetition each Sunday. Also, in the coming months, look for some variety in the introductions and accompaniments to familiar hymns. Too often, hymn-singing is a "ho-hum" activity; hopefully this will never be the case at PPC!

-JB

DAN MALONE is our new Coffee Hour Coordinator. Please say "YES" when Dan or members of his committee call to ask if you'll host our after-church fellowship time.

Our new church DIRECTORY is completed, has been paid for, and should be arriving in the next two to three weeks.

YES, THE LADIES OF PPC HAVE BEEN - AND ARE - BUSY

Thanks are in order for those women who weeded flower beds and sidewalks last week. The grounds look so much better.

Crafts will continue through October, Wednesday mornings at 9:30. The ladies need the following throw-aways for their projects: rug yarn, old embroidery hoops, macrame cord, old golf balls, spray paint, old candles, crayons and parafin. And always fabrics and trims. These may be left in the office marked for the Strawberry Festival. Crafts workshops will NOT meet during the busy months of November and December.

A coffee for all ladies will be held October 5 (no crafts that day) at Mary Lee Malone's home, 1112 Pipestem Place, at 10:00 a.m. Bring your Christmas shopping list; for your convenience, reduced-price 1977 Festival leftovers will be on display for your shopping ease.

CHURCH CALENDAR
OF EVENTS

OCTOBER

1977

SUNDAY	MONDAY	TUESDAY	WEDNESDAY	THURSDAY	FRIDAY	SATURDAY
2 9:45 Orientation 6:30 Seniors at McMahaons World Wide Communion	3 Retreat Registration Deadline	4	5 9:00 Bible study 10:00 Coffee at Mary Lee Malone 7:30 Lions Range Plan. Com. 8:00 Cub scout	6 4:30 7-10's 8:00 Choir	7 7-12th retreat Glenkirk through Sunday	1
9 9:45 Orientation 8:00 New Member Seminar at Manse	10 3-5 Girl Scouts 8:00 Committees	11	12 9:00 Bible study 9:30 Crafts 7:30 Long Range Plan. Com. 8:00 Cub Scout	13 4:30 7-10's 8:00 Choir Training	14 NO SCHOOL	15 9-5:00 Cub Scout training
16	17 8:00 Session	18	19 9:00 Bible study 9:30 Crafts	20 4:30 7-10's 8:00 Choir	21 Dr. Phil in Philadelphia for Evangelism Conference,	22
23 6:30 Seniors at Bissels	24	25	26 9:00 Bible Study 9:30 Crafts	27 4:30 7-10's 8:00 Choir	28 8:00 Square Dance Club	29
30 6:30 Seniors at McMahaons	31					

STEEPLE TO PEOPLE

POTOMAC
PRESBYTERIAN CHURCH
POTOMAC, MARYLAND

NOVEMBER

1977

PROGRESS REPORT - 1978 PLEDGE CAMPAIGN

Our proposed budget for 1978 is \$100,000. Of that amount, \$83,000 is needed in pledges from the congregation. To date, we have heard from 103 families and 9 young people with a total of \$71,200.

If you have not made your pledge for 1978, won't you please do so this week?

FROM THE DESK OF DR. UHL . . .

Thanksgiving and Advent form a very significant season in the life of the church. The mixture of gratitude and anticipation which marks this time of the year is basic to the Christian faith.

At Potomac Presbyterian Church we share both of these - gratitude and anticipation. We are grateful because of the tremendous strides our congregation has made this year. In every way this has been a remarkable year for us. The response of the congregation in worship, education, youth programs, fellowship and mission has been truly outstanding.

We also share the spirit of anticipation because we believe that this congregation will continue its ministry in an extremely vital fashion. The future is open and bright. We are a part of a church which has found a vision and it's a positive vision. I cannot help but believe that the final month of 1977 and the new year of 1978 will continue to be filled with the spirit of renewal we have discovered.

-DLU

CHRISTMAS SERVICES

As is the tradition at Potomac Presbyterian Church, there will be two Christmas Eve Candlelight Services. The first service will be held at 6:00 p.m., December 24. Baby sitting will be provided during this service. The second service will be at 11:00; there will be no sitter during this service.

Sunday morning worship on Christmas Day will be held at the usual time of 11:00 a.m.

PLEDGE UPDATE NEEDED ON 1977 PLEDGES

We ask that everyone make a special effort to bring his pledge for 1977 up to date. We have been able to control our discretionary spending to some extent and are projecting expenses below our 1977 budget, however, our receipts are significantly behind projections. Let's all try to finish our pledges by Sunday, December 18, and be in a position to give a significant gift to the church on Christmas morning at the 11:00 service.

SESSION REPORTS ON LONG RANGE PLANNING COMMITTEE

At its recent retreat at Camp Glenkirk on November 4-6, the Session devoted a great deal of time to the Report of the Long Range Planning Committee. This Report is available in the church office for those who would like to read it. The Session took the following actions to the specific recommendations made in this report.

1. Study of possible facility expansion. The Property Committee of Session has been directed to contact Presbytery to learn what help is available for assessing future facility needs and for planning for any associated expansion of the church facilities.

2. Capital fund to be part of the church budget. This is to be addressed as a priority item for the 1979 budget. It is noted that the net proceeds on the manse change were added to the capital fund.

3. Temporary partitions in the Fellowship Hall. The Property Committee has been directed to investigate this possibility and to report upon same at the January Session meeting.

4. Renting classroom space at Potomac Elementary. The Property Committee is to investigate this possibility and to report in January.

5. Additional office and storage space. The Property Committee was authorized to spend up to \$2500 from the capital fund to convert the library into an office and counseling/meeting area for the pastor and to convert his office to one for the Director of Christian Education, including the library.

6. Additional storage cabinets. The Property Committee is to study this possibility and to report in January, including use of a designated gift for providing 7-10's storage space.

7. Two services of worship. The Congregational Life Committee is to investigate this possibility, although such a move is not anticipated in the near future.

8. More storage space in the Choir Room. To be considered by the Property Committee.

9. To repair or replace the organ. The Session agreed to repair the organ as required to keep it in effective running condition.

10. Choir balcony in sanctuary. The item was tabled for the present, to be considered in the future.

11. Renovation of Narthex. The Property Committee is to present a report on possible improvements to the Narthex at the April Session meeting.

12. Furnace, window screens, wall cracks. Already corrected.

13. Publicity for Church. To be addressed by the Congregational Life Committee.
14. Relieve demands on Elders. The Session voted to approve the concept of a Board of Deacons, and the Congregational Life Committee is to make recommendations on its size and duties at the December Session meeting.
15. Concern for new member involvement, unmarrieds, inactive member follow-up, membership roll update, visitation. These concerns are to be addressed as a part of the previous item.
16. Two coffee host couples on Sunday. This change is to be made in the near future.
17. Reinstitute Family Dinner. To be addressed by Congregational Life Committee and reported to Session in January.
18. Double session in the Sunday School. This has already been accomplished.
19. Mission giving at 10-15% of budget by 1981. Mission giving is a major priority item of Session; proposed budget for 1978 includes 11% for mission. Mission Committee to continue its active work in this area.
20. Local mission participation. Mission Committee is to investigate possible cooperative ventures with other local churches.
21. Replacement for church secretary when she resigns. The Session is planning for this eventuality but hopes that Mrs. Hart will continue her vital work for sometime yet.
22. Add a Hand Bell Choir. Consideration is being given by the Memorial Committee to using Memorial Funds to procure hand bells for such a choir.
23. Questionnaire concerns: improve grounds maintenance, teen canteen, men's activities, summer Sunday school, summer activities for collegians, improve library, use memorial funds, rearrange worship order, more social events, reduce lay leader participation in worship service, change times of worship service. The Property Committee and the Congregational Life Committee were charged with consideration of these items.

FAMILY GATHERINGS FOR THE ADVENT SEASON

The Family Gatherings for the Advent season got off to a great start with Alice and Lew Smith in charge of the first Sunday. With the theme of "Anticipation" the participating families made candles to be used in their family observation of Advent. Girls and boys from the first and second grade Sunday School class provided a tableaux of angels and shepherds to set the scene for the Scripture reading. There were over a hundred involved in the happy time together.

December 4 PREPARATION. 9:45-10:45

Each family will make Christmas tree decorations for their home and one to decorate the tree in Fellowship Hall. The third and fourth grade Sunday School class will provide a scene pertaining to the Bible lesson.

December 11 CELEBRATION. 9:45-10:45

In keeping with the joy of the Advent season, we will have an informal musical morning with participation from all ages. A craft in keeping with music will be made. All persons who play any instrument please come and share your talent. The fifth and sixth grade Sunday School class will provide the tableaux for the Scripture.

Anyone who plays an instrument is asked to bring it and join in playing carols. (Participation not perfection is the key). If you wish to practice beforehand, the carols are "Silent Night", "Away In A Manger", and "Joy to the World". Also, if you have any interesting or unusual bells, please bring them to show and share with the group.

December 18 PRESENTATION. 9:45-10:45

Each family will decorate and fill a gift box of cookies and candy for elderly persons in our community. Each family is asked to make their favorite Christmas recipe to help fill boxes and share with others. The boxes will go to elderly friends. Seventh and eighth graders will provide the tableaux.

CHURCH SCHOOL WILL BE HELD ON SUNDAY, DECEMBER 4. IT WILL NOT BE HELD ON SUNDAYS, DECEMBER 11, 18, 25 and JANUARY 1. ALL CLASSES AND PROGRAMS WILL RESUME ON JANUARY 8, 1978. WE WILL BEGIN PROMPTLY AT 9:45. NURSERY CARE WILL BE PROVIDED.

MAY WE INTRODUCE OUR NEW MEMBERS

We are happy to welcome to membership in our church and to its work and worship, the following new members who were received by the Session on November 13.

Mrs. Lucille Bloch (Lou) and daughter, Kathee, 7610 Hamilton Spring Road, Bethesda, Maryland 20034. 365-1718. Lou, who was away from this area for seven years, restored her status to active membership. Kathee comes to us by Certificate of Transfer from Lutheran American Church, Berlin, Germany. Lou's husband, Felix, is in the Foreign Service and Lou works as a Consultant on Medical Education. Besides Kathee, the Blochs have another daughter, Andrea, 14.

Dr. and Mrs. Julio Quintana (Olga), 9912 Connestoga Way, Potomac. 299-3348. Julio and Olga come by Certificate of Transfer from Cherrydale Baptist Church, Arlington, Virginia. Julio is an anesthesiologist at Providence Hospital and Olga teaches Accounting and Finance at Towson State College two days a week. The Quintanas have two sons, Dennis, 9½ and Lloyd, 8.

Mr. and Mrs. Paul Young (Peggy), 11800 Becket Street, Potomac. 279-9153. Both Paul and Peggy come to us by Reaffirmation of Faith. Paul is a Management Consultant with Peat, Marwick, Mitchell and Company. Peggy is a Basic Research Associate with the Frederick Cancer Research Center at Frederick, Maryland. The Youngs have two children, Dana, 14 and John Paul, 7.

NEW MEMBER ORIENTATION SERIES

A new member orientation series will begin on January 8. The three-part orientation series for prospective members will be held at 9:40 a.m. on Sundays, January 8, 15, and 22. New members will meet

with the Session on Sunday, January 22 at 8:00 p.m. at the manse. The new members will be recognized at the 11:00 church service on Sunday, January 29.

Anyone wishing to unite with the church, please call Dr. Uhl at 299-6007, or Camille Kendall at 424-7539.

EUROPEAN CAROLS TO BE FEATURED AT 1977 CAROL SERVICE

Don't plan to be anywhere else but 10301 River Road on Sunday, December 18 at 11:00 a.m. Our three choirs have a real treat in store for you when they present the traditional carol service. This year the emphasis is on European carols, and you will hear some interesting carols sung in German, Spanish and Latin, plus familiar carols to be sung by all. Don't miss it!

On a personal note: contrary to popular belief, we do have telephones in Virginia, although the pictorial directory people don't seem to think so! For those of you who have thrown away your old directories and now don't know how to reach me, I still live at 908 Beverly Drive in Alexandria and on rare occasions can be reached at 836-5665.

-JB

FROM THE MISSION COMMITTEE

Community Ministry of Montgomery County

During the past year, PPC has granted financial assistance to CMMC in several ways. One of the key concerns of the group during 1977 was the Youth Hearings, conducted by several member churches throughout the county. Although PPC did not actually sponsor a hearing, we did make a financial gift for the typing of the final Youth Hearings report.

The following is an excerpt taken from a letter written to our Mission Interpretation Committee from the Director of Community Ministry, Rev. Lon Dring.

"We are very, very grateful for the special gift of the Potomac Church to Community Ministry. Your contribution will pay for the typing of our Youth Hearings Report.

"On Monday, December 19, 1977, at 7:30 p.m., in the Council Hearing Room of the County Office Building, there will be a special joint session of the County Council and Executive to receive the CMMC report. We are looking to our member churches to come out and support us that evening."

In Bethesda and Around the World

A most unusual shop has recently been called to our attention through an article in the Washington Star. It is the world of Crafts, an outlet for wonderful goods and crafts produced by some of the world's poorest people. The man responsible for this endeavor is Dr. Varghese Kerrikatte and his aim is to help the poor help themselves.

Under the umbrella organization of International Program for Human Resource Development, the retail store offers for sale some of the crafts and art work from several countries and at very reasonable prices.

Dr. Kerrikatte and IPHRD have been successful in getting aid from such groups as Church Women United, the Hunger Fund of United Presby-

terian Church and the Board of Ministries of the United Church of Christ.

The World of Crafts is located at the Connor Building, 7720 Wisconsin Avenue in Bethesda, and is a wonderful place to do Christmas of gift shopping.

SENIOR HIGHS' STUDY OF THE ELDERLY

At the Senior High planning meeting held late last spring, the group decided to devote the Fall-Winter semester to a study of the elderly. Next, Rev. Lon Dring of the Montgomery County Community Ministry was asked to lead the sessions. He agreed and the seniors were ready for fall. The first meeting with Rev. Dring was a planning meeting at which goals and objectives were set. The questions were: "How do I relate to an older person?", "What is it like to be old?" and "How can I prepare for being old?" In the next meetings, the seniors saw movies which were discussed, they filled out and talked about questionnaires and simulated the various sensory handicaps of the elderly. They also wrote creeds about their beliefs about the elderly. The highlight of the study was an all-day field trip on November 17. They visited Rossmoor-Leisure world, The County Council on Aging, and Don Wassman, 1400 Fenwick and their Support Center, and the Hebrew Home. They shared lunch at a feeding program at 1400 Fenwick. In the concluding meeting on the elderly, the senior highs reviewed possible Field Services in which they could help the elderly. It is their hope to pursue these services later this year.

TO THE PARENTS OF JUNIOR HIGHS

The Christian Education Committee is making plans for the new calendar year. Information from you is needed as we plan for the young people. A questionnaire is to be sent home with regard to our sponsoring a Sexuality Seminar for the junior highs in the spring. It will be planned in response to your response on the questionnaire. Please consider the possibility carefully and if there are additional questions, please call Mrs. Cathey or Bill Hutchison.

The 7-10's will sing Christmas carols at the Presbyterian Home on Thursday, December 22. We hope to have a large representation of junior highs participate.

Attention: Parents of King David Choir members! Unfortunately, choir rehearsal must go on during the Advent Sundays. Would you please help out by getting your young choir members to church by 9:30 on December 4, 11 and 18? That way the choir can rehearse for 30 minutes and the children will then be able to attend the Family Advent celebrations with their parents. This rehearsal time is essential if the children are to be prepared for the Carol Service on December 18. Thanks for your cooperation!

The congregation wishes to thank the SENIOR HIGHS for the splendid Youth Service they conducted on November 6th. We're so proud of you!

The sympathy of the congregation is extended to Bo Heininger in the death of his father, Howard G. Heininger, Sr., recently in Florida.

"O Come All Ye Faithful" - Singles and Doubles will sing carols at the Fernwood Nursing Home at 6530 Democracy Blvd, (past Montgomery Mall), Friday, December 16. Meet there promptly at 7:00. A light supper will be served afterwards at the home of Dawn and Don Thompson, 8042 Inverness Ridge Road (off Seven Locks Road). Cost \$1.50 per person. Please call Dawn to let her know you are coming - 299-6214.

Anyone wishing to help decorate the church in its Christmas finery, come on Saturday, December 10, between 10 a.m. and 1 p.m. Watch Bill King climb the ladder!

What is C H R C H without U in it?

Our own Patti Bissell was chosen recently as one of the five top women entrepreneurs in the Washington metropolitan area by the Capital area chapter of the National Association of Women Business Owners. Congratulations, Patti!

CORRECTION for your directory: The correct telephone number for the Lowell Perry family is 299-6067 and one daughter, Brenda, was omitted.

Red poinsettias (8-10 blooms, 6" pot, 2 plants per pot) may be ordered at \$7.00 each. They will be a part of the Christmas decorations in the sanctuary and may be picked up after either Christmas Eve service or on Christmas Day. Checks made payable to Potomac Presbyterian Church marked "Christmas Flowers" may be given to Peg Hawley in the Narthex on the next several Sundays.

Over 350 pounds of clothing were packed by our ladies on November 16 to be sent to Church World Service to help those in need around the world. We thank all those who contributed clothing, postage monies, packing time, and a special thanks to Carrie Howe for her most able chairing of this mission project.

Enclosed with this issue of your church newsletter is a guide for your at-home celebration of the Advent season. We hope you will enjoy its use together.

CHURCH CALENDAR
OF EVENTS

DECEMBER

1977

SUNDAY	MONDAY	TUESDAY	WEDNESDAY	THURSDAY	FRIDAY	SATURDAY
				1 7-10's 4:30 Choir 8:00	2	3
4 King David 9:30 Advent 9:45 Sunday School	5	6	7 Bible Study 9:00	8 7-10's 4:30 Choir 8:00	9	10
11 King David 9:30 Advent 9:45 NO Sunday School	12 GS 3-5:00 Committees 8:00	13	14 Bible Study 9:00	15 7-10's 4:30 Choir 8:00	16	17
18 Carol Service King David 9:30 Advent 9:45 NO Sunday School Square Dance 8:00	19 GS 3-5:00 Session 8:00	20	21 Bible Study 9:00	22 7-10's 4:30 Choir 8:00	23	24 Candlelight Services 6:00/11:00
25 Steeple to People deadline NO Sunday School Christmas Day	26 NO SCHOOL	27	28	29 Choir 8:00	30	31

**STEEPLE
TO
PEOPLE** POTOMAC
PRESBYTERIAN CHURCH
POTOMAC, MARYLAND

DECEMBER

1977

FROM THE DESK OF DR. UHL . . .

Sue and I want to express our thanks to all of you for the cards and gifts which we received this Christmas season. They were reminders to us of your care and concern. With this note the folks at the Uhl house want to wish each of you a joyous holiday season and a Happy New Year.

-DLU

BOARD OF DEACONS ESTABLISHMENT - CONGREGATIONAL MEETING SUBJECT

At the Congregational Meeting on Sunday, January 15, members will be asked to vote on a Session proposal that a Board of Deacons be established at Potomac Presbyterian Church early in 1978. In light of current growth and an expected continuation of this trend for the foreseeable future, the Session believes that certain tasks would best be fulfilled by a Board of Deacons.

The post of Deacon is a distinct office in the Presbyterian structure of church leadership. Deacons are to minister to persons in need, to the sick, the friendless, and to anyone in distress. Within our congregation, there are specific duties to be performed by Deacons: (1) visiting inactive members to encourage them to become more involved and to ascertain their interests with respect to their further relationships with the church; (2) visiting new members to further welcome them into the congregation; and (3) serving as leaders of revitalized parish groups.

The proposed Board of Deacons would be composed of twelve persons and the Pastor, its moderator. They would be elected by the congregation through the assistance of the Nominating Committee, and would serve terms of three years. The Board would meet at least bi-monthly, reporting thereafter to the Session.

The Session urges all members to consider carefully this proposal.

QUEEN'S COLLEGE CHOIR TO VISIT PPC JANUARY 23

The Queen's College Choir of Charlotte, North Carolina, will perform in our sanctuary on Monday, January 23, at 8:00 p.m. Please plan to attend this concert by the choir of one of the leading Presbyterian colleges. Also, please consider providing lodging in your home for one or two of the girls or their leaders that night. We must find accommodations for approximately 35 persons. Please phone Jon and Peggy Hawley (424-7628) if you can help meet this need.

NEW MEMBER ORIENTATION SERIES

A New Member Orientation Series will begin on January 8. The three-part orientation series for prospective members will be held at 9:40 a.m. on Sundays, January 8, 15 and 22. New members will meet with the Session on Sunday, January 22, at 8:00 p.m. at the Manse. The new members will be recognized at the 11:00 church service on Sunday, January 29. Anyone wishing to unite with the church, please call Dr. Uhl at 299-6007 or Camille Kendall 424-7539.

Mrs. Mary Cathey has been selected to participate in a by-invitation-only event which is being sponsored by National Capital Union Presbytery. The teacher training workshop is to offer an opportunity to increase teaching skills and supply additional training in helping others to teach. This is a special opportunity for those who will be participating.

Confirmation Class will begin on Thursday, January 12, at 4:30. All young persons 9th grade or above are eligible. Please call the church office to register.

Offering envelopes for 1978 may be picked up on the table in the narthex.

The 1978 Flower Chart is available in the narthex. Please sign up for a Sunday of your choice.

THANKYOUTHANKYOUTHANKYOU

The Christmas thank you list is a long one. The holiday season brought us many blessings for which we give grateful thanks. Among these are:

THE FAMILY ADVENT GATHERINGS planned by Claudia and Don Bergsma (coordinators) along with Alice and Lew Smith, Dixie and Bob Stewart, Wilma and Gene Sharer, and Rachel and Jim Harwell. Also we thank our fine children, young people, teachers, and families who supported and participated in the very happy time of "Anticipation, Preparation, Celebration and Presentation". From our efforts there were 90 boxes of cookies sent to the Presbyterian Home, 85 individual bags of cookies to the Rockville Nursing Home, and numerous bags to a soup kitchen in downtown Washington.

THE SEVENTENS sang carols for the Presbyterian Home and delivered the cookies personally to the guests.

ALL SEVENTH, EIGHTH AND NINTH GRADERS were given the opportunity to share in the giving of money which provided Christmas for an inner city youth named Andre. Clothing and toys were supplied. Love, joy and concern went with the gifts.

SENIOR HIGHS went caroling at the Rockville Nursing Home and delivered cookies to the residents. This was a fitting climax to their unit study on the elderly.

AND, of course, thanks to all those persons who helped decorate the church so beautifully for this Advent and Christmas season.

Will you share your family Christmas traditions with PPC? Please write up any traditions you engage in or know about to assist with 1978 Advent planning and turn them in to the church office.

ATTENTION, SENIOR HIGHS

National Capital Union Presbytery is sponsoring a Senior High Retreat at Camp Glenkirk, Virginia, January 6-8. The theme is "Putting Your Right Foot Forward in the New Year". Cost for the weekend is \$22.50 per person and space will be given on a first come, first served basis. It promises to be an exciting time for all who wish to join in the fellowship.

PPC Senior Highs will have their annual ski retreat on the weekend of February 10-12, at the Laurelville Mennonite Retreat Center, Mt. Pleasant, Pennsylvania. Cost will be \$26.00 per person. More details will be given early in 1978. As there will be space for only 26 young people, the space will be given on a first come, first served basis. Let's plan now for a great time!

Cecilia Watts, the grandmother of Joyce Jenkins, died at her home in Pennsylvania last Friday. She was 101 years old. Our love and prayers are with the Jenkins family.

Strawberry Festival Crafts Workshops will resume Wednesday, January 4, at 10:00 a.m. Wherever you are on the talent spectrum, we can use your willing hands and hearts! Beach bags, monkeys, recipe card holders, mobiles, and puppets are just a few of the winter projects planned.

Congratulations to the Bob Sanders Family! Bob and Florence Sanders became "first-time" grandparents when their daughter Barbara and husband Rod had a baby girl, Natalie, in early December. This makes Bob's mother, Mrs. Ethel Sanders, a great-grandmother. There are now four generations living in the Sanders household!

Singles and Doubles FUN NIGHT will be held at the Kendalls, 12309 Espalier Place in Montgomery Square on Friday, January 13, at 7:00. There will be a pot luck supper followed by bridge, ping-pong, "pocket billiards", etc. Please RSVP to Virginia Fredlune 762-8686 by Wednesday, January 11. Casual dress.

POTOMAC AFS CHAPTER - HOST FAMILY NOTICE

The Potomac AFS Chapter at Churchill High School is currently looking for potential host families for next year. Being a host family can be a unique learning experience for a family, not only learning about the country of their student, but also gaining an insight into their own community and themselves. The main criterion for being a good host family is a willingness to share your daily life with a student. It is not necessary to have a teenager in the family.

AFS is a non-profit organization that has been involved in cross-cultural exchanges for teenagers for 30 years. Students come to the U.S. from 60 participating countries for a year. AFS also has programs for American teenagers going to the 60 countries.

The Chapter is hoping to have more than one student at Churchill next year. If your family is interested or would like more information, contact Arlene and Howard Ammerman, 299-9543 or Fran and Vernon Adler, 299-5177.

CHURCH CALENDAR
OF EVENTS

JANUARY

1978

SUNDAY	MONDAY	TUESDAY	WEDNESDAY	THURSDAY	FRIDAY	SATURDAY
1 New Year's Day	2	3	4 Bible Study 9:00 Crafts 10:00	5 7-10's 4:30 Choir 8:00	6	7
8 New Member Seminar 9:40 Srs. 6:30 Kendalls	9 Committees 8:00	10	11 Bible Study 9:00 Crafts 10:00	12 7-10's 4:30 Choir 8:00 Confirmation Class begins	13 Singles and Doubles Fun Night 7:00	14
15 New Member Seminar 9:40 Congregational Meeting 12:00 Srs. 6:30 Hutchisons	16 Session 8:00	17	18 Bible Study 9:00 Crafts 10:00	19 7-10's 4:30 Choir 8:00	20	21
22 New Member Seminar 9:40 New Members meet with Session at the Manse 8:00	23 Queen's College Choir Concert 8:00	24	25 Bible Study 9:00 Crafts 10:00	26 7-10's 4:30 Choir 8:00	27	28
29 Srs. 6:30 Skimmers New Member Recognition 11:00	30	31				
Srs. Fun Night						